

For Research Use Only

# PRLR Monoclonal antibody, PBS Only

Catalog Number: 67292-1-PBS



## Basic Information

<b>Catalog Number:</b> 67292-1-PBS	<b>GenBank Accession Number:</b> BC059392	<b>Purification Method:</b> Protein G purification
<b>Size:</b> 1 mg/ml	<b>GeneID (NCBI):</b> 5618	<b>CloneNo.:</b> 2E10G5
<b>Source:</b> Mouse	<b>UNIPROT ID:</b> P16471	
<b>Isotype:</b> IgG1	<b>Full Name:</b> prolactin receptor	
<b>Immunogen Catalog Number:</b> AG28778	<b>Calculated MW:</b> 622 aa, 70 kDa	
	<b>Observed MW:</b> 45 kDa, 70 kDa, 85-85 kDa	

## Applications

**Tested Applications:**  
WB, Indirect ELISA, IHC

**Species Specificity:**  
Human, mouse

## Background Information

PRLR belongs to the cytokine type I subfamily, which also includes receptors for leptin, leukemia inhibiting factor, erythropoietin and so on. PRLR has long and short forms at approximately 70 and 45 kDa, respectively, and the mature, glycosylated form of PRLR migrates at 85-95 kDa in human decidua and placenta (PMID: 18258683).

## Storage

**Storage:**  
Store at -80°C.  
**The product is shipped with ice packs. Upon receipt, store it immediately at -80°C**

**Storage Buffer:**  
PBS Only

For technical support and original validation data for this product please contact:

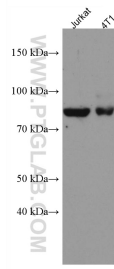
T: 4006900926

E: [Proteintech-CN@ptglab.com](mailto:Proteintech-CN@ptglab.com)

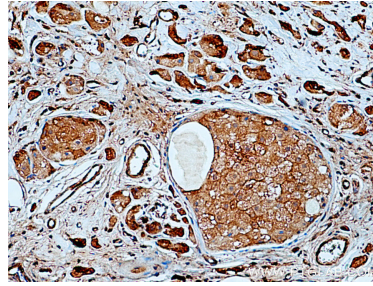
W: [ptgcn.com](http://ptgcn.com)

**This product is exclusively available under Proteintech Group brand and is not available to purchase from any other manufacturer.**

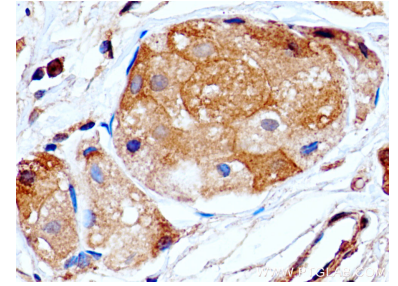
## Selected Validation Data



Various lysates were subjected to SDS PAGE followed by western blot with 67292-1-Ig (PRLR antibody) at dilution of 1:1000 incubated at room temperature for 1.5 hours. This data was developed using the same antibody clone with 67292-1-PBS in a different storage buffer formulation.



Immunohistochemical analysis of paraffin-embedded human breast cancer tissue slide using 67292-1-Ig (PRLR antibody) at dilution of 1:200 (under 10x lens). Heat mediated antigen retrieval with Tris-EDTA buffer (pH 9.0). This data was developed using the same antibody clone with 67292-1-PBS in a different storage buffer formulation.



Immunohistochemical analysis of paraffin-embedded human breast cancer tissue slide using 67292-1-Ig (PRLR antibody) at dilution of 1:200 (under 40x lens). Heat mediated antigen retrieval with Tris-EDTA buffer (pH 9.0). This data was developed using the same antibody clone with 67292-1-PBS in a different storage buffer formulation.