

For Research Use Only

CSE1L Monoclonal antibody, PBS Only



Catalog Number: 67306-1-PBS

Basic Information

Catalog Number: 67306-1-PBS	GenBank Accession Number: BC109313	Purification Method: Protein A purification
Size: 1 mg/ml	GeneID (NCBI): 1434	CloneNo.: 1G1A11
Source: Mouse	UNIPROT ID: P55060	
Isotype: IgG2a	Full Name: CSE1 chromosome segregation 1-like (yeast)	
Immunogen Catalog Number: AG29131	Calculated MW: 971 aa, 110 kDa	
	Observed MW: 100 kDa	

Applications

Tested Applications:
WB, Indirect ELISA, IHC, IF

Species Specificity:
Human, mouse, rat

Background Information

Storage

Storage:
Store at -80°C.
Storage Buffer:
PBS Only

For technical support and original validation data for this product please contact:

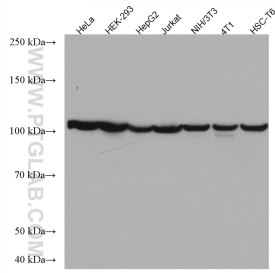
T: 4006900926

E: Proteintech-CN@ptglab.com

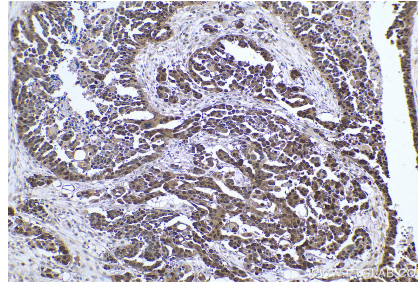
W: ptgcn.com

This product is exclusively available under Proteintech Group brand and is not available to purchase from any other manufacturer.

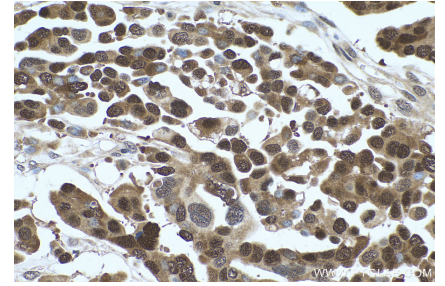
Selected Validation Data



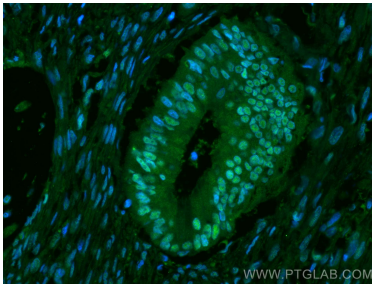
Various lysates were subjected to SDS PAGE followed by western blot with 67306-1-Ig (CSE1L antibody) at dilution of 1:10000 incubated at room temperature for 1.5 hours. This data was developed using the same antibody clone with 67306-1-PBS in a different storage buffer formulation.



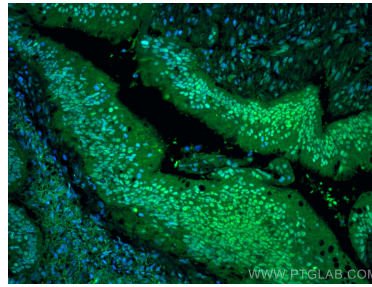
Immunohistochemical analysis of paraffin-embedded human colon cancer tissue slide using 67306-1-Ig (CSE1L antibody) at dilution of 1:1000 (under 10x lens). Heat mediated antigen retrieval with Tris-EDTA buffer (pH 9.0). This data was developed using the same antibody clone with 67306-1-PBS in a different storage buffer formulation.



Immunohistochemical analysis of paraffin-embedded human colon cancer tissue slide using 67306-1-Ig (CSE1L antibody) at dilution of 1:1000 (under 40x lens). Heat mediated antigen retrieval with Tris-EDTA buffer (pH 9.0). This data was developed using the same antibody clone with 67306-1-PBS in a different storage buffer formulation.



Immunofluorescent analysis of (4% PFA) fixed human colon cancer tissue using CSE1L antibody (67306-1-Ig, Clone: 1G1A11) at dilution of 1:400 and CoraLite®488-Conjugated AffiniPure Goat Anti-Mouse IgG(H+L). This data was developed using the same antibody clone with 67306-1-PBS in a different storage buffer formulation.



Immunofluorescent analysis of (4% PFA) fixed human colon cancer tissue using CSE1L antibody (67306-1-Ig, Clone: 1G1A11) at dilution of 1:400 and CoraLite®488-Conjugated AffiniPure Goat Anti-Mouse IgG(H+L). This data was developed using the same antibody clone with 67306-1-PBS in a different storage buffer formulation.