

For Research Use Only

# DCPS Monoclonal antibody, PBS Only



Catalog Number: 67311-1-PBS

## Basic Information

<b>Catalog Number:</b> 67311-1-PBS	<b>GenBank Accession Number:</b> BC014532	<b>Purification Method:</b> Protein A purification
<b>Size:</b> 1 mg/ml	<b>GeneID (NCBI):</b> 28960	<b>CloneNo.:</b> 1B2E4
<b>Source:</b> Mouse	<b>UNIPROT ID:</b> Q96C86	
<b>Isotype:</b> IgG2b	<b>Full Name:</b> decapping enzyme, scavenger	
<b>Immunogen Catalog Number:</b> AG8872	<b>Calculated MW:</b> 337 aa, 39 kDa	
	<b>Observed MW:</b> 35-40 kDa	

## Applications

**Tested Applications:**  
WB, Indirect ELISA, IHC, IF

**Species Specificity:**  
Human, Mouse, Rat

## Background Information

DcpS, which is a member of the histidine triad (HIT) superfamily of pyrophosphatases, is the first HIT protein with a defined biological function and identifies the HIT motif as a new mRNA decapping domain. DcpS can encode a 38-40 kDa protein, and has the potential to form a homodimer of 80 kDa (PMID: 12198172).

## Storage

**Storage:**  
Store at -80°C.  
**The product is shipped with ice packs. Upon receipt, store it immediately at -80°C**

**Storage Buffer:**  
PBS Only

For technical support and original validation data for this product please contact:

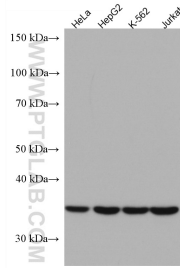
T: 4006900926

E: [Proteintech-CN@ptglab.com](mailto:Proteintech-CN@ptglab.com)

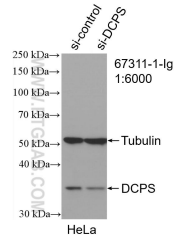
W: [ptgcn.com](http://ptgcn.com)

**This product is exclusively available under Proteintech Group brand and is not available to purchase from any other manufacturer.**

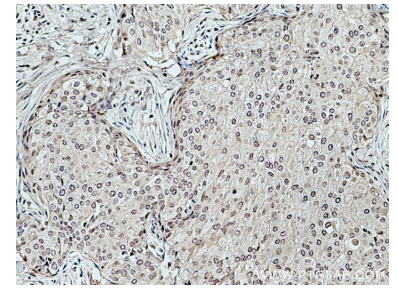
## Selected Validation Data



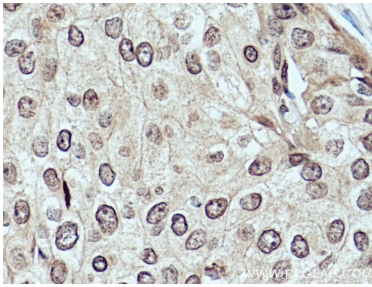
Various lysates were subjected to SDS PAGE followed by western blot with 67311-1-Ig (DCPS antibody) at dilution of 1:3000 incubated at room temperature for 1.5 hours. This data was developed using the same antibody clone with 67311-1-PBS in a different storage buffer formulation.



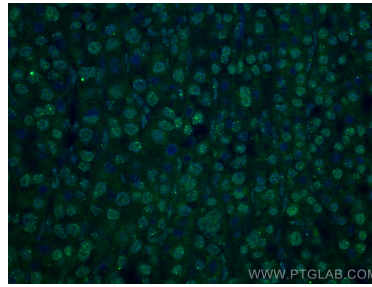
WB result of DCPS antibody (67311-1-Ig: 1:6000; incubated at room temperature for 1.5 hours) with sh-Control and sh-DCPS transfected HeLa cells. This data was developed using the same antibody clone with 67311-1-PBS in a different storage buffer formulation.



Immunohistochemical analysis of paraffin-embedded human breast cancer tissue slide using 67311-1-Ig (DCPS antibody) at dilution of 1:500 (under 10x lens). Heat mediated antigen retrieval with Tris-EDTA buffer (pH 9.0). This data was developed using the same antibody clone with 67311-1-PBS in a different storage buffer formulation.



Immunohistochemical analysis of paraffin-embedded human breast cancer tissue slide using 67311-1-Ig (DCPS antibody) at dilution of 1:500 (under 40x lens). Heat mediated antigen retrieval with Tris-EDTA buffer (pH 9.0). This data was developed using the same antibody clone with 67311-1-PBS in a different storage buffer formulation.



Immunofluorescent analysis of (4% PFA) fixed human liver cancer tissue using DCPS antibody (67311-1-Ig, Clone: 1B2E4) at dilution of 1:400 and CoraLite®488-Conjugated AffiniPure Goat Anti-Mouse IgG(H+L). This data was developed using the same antibody clone with 67311-1-PBS in a different storage buffer formulation.