

For Research Use Only

# MTMR2 Monoclonal antibody, PBS Only



Catalog Number: 67312-1-PBS

Featured Product

## Basic Information

Catalog Number:

67312-1-PBS

Size:

1 mg/ml

Source:

Mouse

Isotype:

IgG2b

Immunogen Catalog Number:

AG28413

GenBank Accession Number:

BC052990

GeneID (NCBI):

8898

UNIPROT ID:

Q13614

Full Name:

myotubularin related protein 2

Calculated MW:

73 kDa

Observed MW:

66-73 kDa

Purification Method:

Protein A purification

CloneNo.:

1B11B7

## Applications

Tested Applications:

WB, Indirect ELISA

Species Specificity:

Human, Pig

## Background Information

MTMR2 (myotubularin-related protein 2) is also named as KIAA1073 and belongs to the non-receptor class myotubularin subfamily, which is characterized by the presence of a phosphatase domain. It may regulate vesicular trafficking in Schwann cells (PMID:17880751) and its reversible phosphorylation represents a critical mechanism for regulating the subcellular localization of MTMR2 (PMID:21372139). MTMR2 is a 73 kDa protein in its monomeric form and exist as a dimer within cells and the protein re-localizes to membranes in hypo-osmotic settings (PMID:16399794). Defects in MTMR2 are the cause of Charcot-Marie-Tooth disease type 4B1 (CMT4B1). MTMR2 has two isoforms with the molecular mass of 73 and 66 kDa.

## Storage

Storage:

Store at -80°C.

The product is shipped with ice packs. Upon receipt, store it immediately at -80°C

Storage Buffer:

PBS Only

For technical support and original validation data for this product please contact:

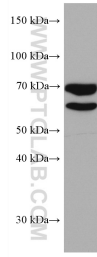
T: 4006900926

E: Proteintech-CN@ptglab.com

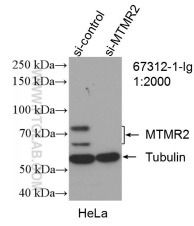
W: ptgcn.com

This product is exclusively available under Proteintech Group brand and is not available to purchase from any other manufacturer.

## Selected Validation Data



HeLa cells were subjected to SDS PAGE followed by western blot with 67312-1-Ig (MTMR2 antibody) at dilution of 1:3000 incubated at room temperature for 1.5 hours. This data was developed using the same antibody clone with 67312-1-PBS in a different storage buffer formulation.



WB result of MTMR2 antibody (67312-1-Ig; 1:2000; incubated at room temperature for 1.5 hours) with sh-Control and sh-MTMR2 transfected HeLa cells. This data was developed using the same antibody clone with 67312-1-PBS in a different storage buffer formulation.