

For Research Use Only

# ARPC1B Monoclonal antibody, PBS Only



Catalog Number: 67320-1-PBS

## Basic Information

|   |  |   |
|---|--|---|
| <b>Catalog Number:</b><br>67320-1-PBS       | <b>GenBank Accession Number:</b><br>BC007555                                 | <b>Purification Method:</b><br>Protein G purification |
| <b>Size:</b><br>1 mg/ml                     | <b>GeneID (NCBI):</b><br>10095   | <b>CloneNo.:</b><br>2C8A1                             |
| <b>Source:</b><br>Mouse                     | <b>UNIPROT ID:</b><br>O15143   |   |
| <b>Isotype:</b><br>IgG1                     | <b>Full Name:</b><br>actin related protein 2/3 complex,<br>subunit 1B, 41kDa |   |
| <b>Immunogen Catalog Number:</b><br>AG29095 | <b>Calculated MW:</b><br>41 kDa  |   |
|   | <b>Observed MW:</b><br>38 kDa  |   |

## Applications

**Tested Applications:**  
WB, Indirect ELISA, IHC

**Species Specificity:**  
Human, rat, mouse

## Background Information

ARPC1B also known as ARC41, p41-ARC, or p40-ARC, is one of seven subunits of the human Arp2/3 protein complex, that belongs to the SOP2 family. ARPC1B localizes on centrosomes and has a distinct role in centrosomal homeostasis. ARPC1B is both a physiological activator and substrate of Aurora A kinase, and these interactions help to maintain mitotic integrity in mammalian cells. In recent research, ARPC1B is selected as a candidate prediction marker for sensitivity of Choroidal malignant melanomas to radiotherapy.

## Storage

**Storage:**  
Store at -80°C.  
**The product is shipped with ice packs. Upon receipt, store it immediately at -80°C**

**Storage Buffer:**  
PBS Only

For technical support and original validation data for this product please contact:

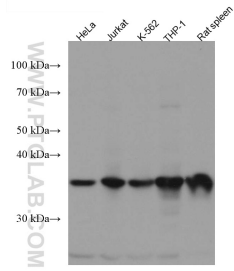
T: 4006900926

E: [Proteintech-CN@ptglab.com](mailto:Proteintech-CN@ptglab.com)

W: [ptgcn.com](http://ptgcn.com)

**This product is exclusively available under Proteintech Group brand and is not available to purchase from any other manufacturer.**

## Selected Validation Data



Various lysates were subjected to SDS PAGE followed by western blot with 67320-1-Ig (ARPC1B antibody) at dilution of 1:10000 incubated at room temperature for 1.5 hours. This data was developed using the same antibody clone with 67320-1-PBS in a different storage buffer formulation.

