

For Research Use Only

KL Monoclonal antibody

Catalog Number: 67331-1-Ig **2 Publications**



Basic Information

Catalog Number:

67331-1-Ig

Size:

2000 µg/ml

Source:

Mouse

Isotype:

IgG1

Immunogen Catalog Number:

AG27838

GenBank Accession Number:

NM_004795

GeneID (NCBI):

9365

UNIPROT ID:

Q9UEF7

Full Name:

klotho

Calculated MW:

116 kDa

Observed MW:

125-135 kDa

Purification Method:

Protein A purification

CloneNo.:

4D1G11

Recommended Dilutions:

WB 1:2000-1:10000

Applications

Tested Applications:

WB, ELISA

Cited Applications:

IF

Species Specificity:

Human, Mouse, rat

Cited Species:

rat, mouse

Positive Controls:

WB : mouse kidney tissue,

Background Information

Notable Publications

Author	Pubmed ID	Journal	Application
Cheng Chen	35839976	Toxicol Lett	IF
Hao Chen	38558206	Apoptosis	IF

Storage

Storage:

Store at -20°C. Stable for one year after shipment.

Storage Buffer:

PBS with 0.02% sodium azide and 50% glycerol pH 7.3.

Aliquoting is unnecessary for -20°C storage

For technical support and original validation data for this product please contact:

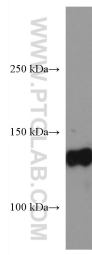
T: 4006900926

E: Proteintech-CN@ptglab.com

W: ptgcn.com

This product is exclusively available under Proteintech Group brand and is not available to purchase from any other manufacturer.

Selected Validation Data



Mouse kidney tissue were subjected to SDS PAGE followed by western blot with 67331-1-Ig (KL antibody) at dilution of 1:5000 incubated at room temperature for 1.5 hours.