

For Research Use Only

# KL Monoclonal antibody, PBS Only

Catalog Number: 67331-1-PBS



## Basic Information

Catalog Number: 67331-1-PBS	GenBank Accession Number: NM_004795	Purification Method: Protein A purification
Size: 1 mg/ml	GeneID (NCBI): 9365	CloneNo.: 4D1G11
Source: Mouse	UNIPROT ID: Q9UEF7	
Isotype: IgG1	Full Name: klotho	
Immunogen Catalog Number: AG27838	Calculated MW: 116 kDa	
	Observed MW: 125-135 kDa	

## Applications

Tested Applications:  
WB, ELISA

Species Specificity:  
Human, Mouse, rat

## Background Information

### Storage

Storage:  
Store at -80°C.  
The product is shipped with ice packs. Upon receipt, store it immediately at -80°C

Storage Buffer:  
PBS only

For technical support and original validation data for this product please contact:

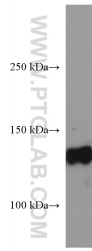
T: 4006900926

E: [Proteintech-CN@ptglab.com](mailto:Proteintech-CN@ptglab.com)

W: [ptgcn.com](http://ptgcn.com)

This product is exclusively available under Proteintech Group brand and is not available to purchase from any other manufacturer.

## Selected Validation Data



Mouse kidney tissue were subjected to SDS PAGE followed by western blot with 67331-1-Ig (KL antibody) at dilution of 1:5000 incubated at room temperature for 1.5 hours. This data was developed using the same antibody clone with 67331-1-PBS in a different storage buffer formulation.