

For Research Use Only

RCC1 Monoclonal antibody, PBS Only



Catalog Number: 67335-1-PBS

Basic Information

Catalog Number: 67335-1-PBS	GenBank Accession Number: BC010067	Purification Method: Protein G purification
Size: 1 mg/ml	GeneID (NCBI): 1104	CloneNo.: 2C2F5
Source: Mouse	UNIPROT ID: P18754	
Isotype: IgG1	Full Name: regulator of chromosome condensation 1	
Immunogen Catalog Number: AG17809	Calculated MW: 421 aa, 45 kDa	
	Observed MW: 45-50 kDa	

Applications

Tested Applications:
WB, Indirect ELISA, IHC

Species Specificity:
Human, mouse

Background Information

CHC1, also named as RCC1, promotes the exchange of ran-bound gdp by gtp. It is involved in the regulation of onset of chromosome condensation in the S-phase. Phosphorylation of RCC1 on serines located in or near its nuclear localization signal activates RCC1 to generate RanGTP on mitotic chromosomes, which is required for spindle assembly and chromosome segregation.

Storage

Storage:
Store at -80°C.
The product is shipped with ice packs. Upon receipt, store it immediately at -80°C

Storage Buffer:
PBS Only

For technical support and original validation data for this product please contact:

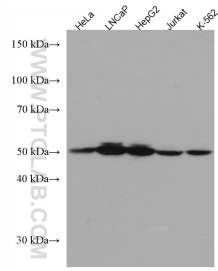
T: 4006900926

E: Proteintech-CN@ptglab.com

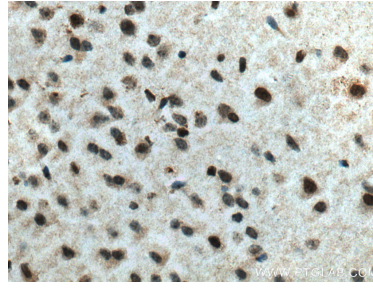
W: ptgcn.com

This product is exclusively available under Proteintech Group brand and is not available to purchase from any other manufacturer.

Selected Validation Data



Various lysates were subjected to SDS PAGE followed by western blot with 67335-1-Ig (RCC1 antibody) at dilution of 1:20000 incubated at room temperature for 1.5 hours. This data was developed using the same antibody clone with 67335-1-PBS in a different storage buffer formulation.



Immunohistochemical analysis of paraffin-embedded mouse brain tissue slide using 67335-1-Ig (RCC1 antibody) at dilution of 1:2000 (under 40x lens). Heat mediated antigen retrieval with Tris-EDTA buffer (pH 9.0). This data was developed using the same antibody clone with 67335-1-PBS in a different storage buffer formulation.