

For Research Use Only

ANAPC5 Monoclonal antibody, PBS Only



Catalog Number: 67348-1-PBS

Basic Information

Catalog Number:

67348-1-PBS

Size:

1 mg/ml

Source:

Mouse

Isotype:

IgG1

Immunogen Catalog Number:

AG7409

GenBank Accession Number:

BC001081

GeneID (NCBI):

51433

UNIPROT ID:

Q9UJX4

Full Name:

anaphase promoting complex subunit

5

Calculated MW:

85 kDa

Observed MW:

85 kDa, 72 kDa

Purification Method:

Protein G purification

CloneNo.:

2A7G5

Applications

Tested Applications:

WB, Indirect ELISA, IHC, IF

Species Specificity:

Human, Mouse, Rat

Background Information

Storage

Storage:

Store at -80°C.

The product is shipped with ice packs. Upon receipt, store it immediately at -80°C

Storage Buffer:

PBS Only

For technical support and original validation data for this product please contact:

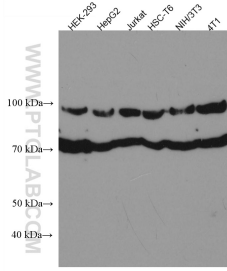
T: 4006900926

E: Proteintech-CN@ptglab.com

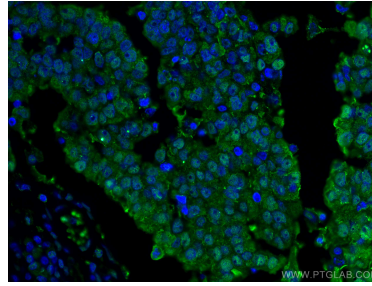
W: ptgcn.com

This product is exclusively available under Proteintech Group brand and is not available to purchase from any other manufacturer.

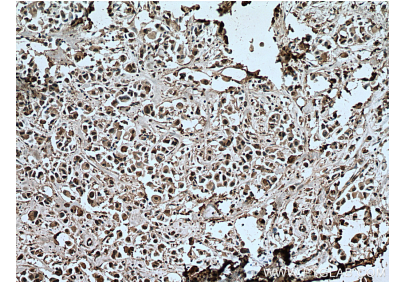
Selected Validation Data



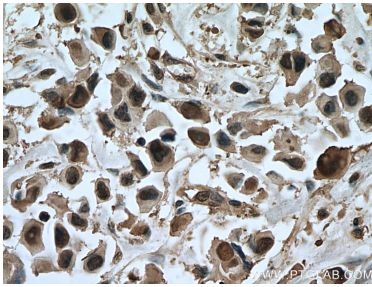
Various lysates were subjected to SDS PAGE followed by western blot with 67348-1-Ig (ANAPC5 antibody) at dilution of 1:10000 incubated at room temperature for 1.5 hours. This data was developed using the same antibody clone with 67348-1-PBS in a different storage buffer formulation.



Immunofluorescent analysis of (4% PFA) fixed human breast cancer tissue using ANAPC5 antibody (67348-1-Ig, Clone: 2A7G5) at dilution of 1:400 and CoraLite®488-Conjugated AffiniPure Goat Anti-Mouse IgG(H+L). This data was developed using the same antibody clone with 67348-1-PBS in a different storage buffer formulation.



Immunohistochemical analysis of paraffin-embedded human breast cancer tissue slide using 67348-1-Ig (ANAPC5 antibody) at dilution of 1:500 (under 10x lens). Heat mediated antigen retrieval with Tris-EDTA buffer (pH 9.0). This data was developed using the same antibody clone with 67348-1-PBS in a different storage buffer formulation.



Immunohistochemical analysis of paraffin-embedded human breast cancer tissue slide using 67348-1-Ig (ANAPC5 antibody) at dilution of 1:500 (under 40x lens). Heat mediated antigen retrieval with Tris-EDTA buffer (pH 9.0). This data was developed using the same antibody clone with 67348-1-PBS in a different storage buffer formulation.