

For Research Use Only

MLH1 Monoclonal antibody, PBS Only



Catalog Number: 67350-1-PBS

Featured Product

Basic Information

Catalog Number:

67350-1-PBS

Size:

1 mg/ml

Source:

Mouse

Isotype:

IgG2a

Immunogen Catalog Number:

AG27723

GenBank Accession Number:

BC006850

GeneID (NCBI):

4292

UNIPROT ID:

P40692

Full Name:

mutL homolog 1, colon cancer, nonpolyposis type 2 (E. coli)

Calculated MW:

756 aa, 85 kDa

Observed MW:

85-100 kDa, 40-45 kDa

Purification Method:

Protein A purification

CloneNo.:

2F12C4

Applications

Tested Applications:

WB, Indirect ELISA

Species Specificity:

Human, rat

Background Information

MLH1, also named as COCA2, belongs to the DNA mismatch repair mutL/hexB family. It heterodimerizes with PMS2 to form MutL alpha which is a component of the post-replicative DNA mismatch repair system (MMR). MutL alpha (MLH1-PMS2) interacts physically with the clamp loader subunits of DNA polymerase III, suggesting that it may play a role to recruit the DNA polymerase III to the site of the MMR. MLH1 also implicated in DNA damage signaling, a process which induces cell cycle arrest and can lead to apoptosis in case of major DNA damages. MLH1 heterodimerizes with MLH3 to form MutL gamma which plays a role in meiosis. (PMID: 16873062, PMID: 18206974) Defects in MLH1 are the cause of hereditary non-polyposis colorectal cancer type 2 (HNPCC2). Defects in MLH1 are a cause of mismatch repair cancer syndrome (MMRCS). Defects in MLH1 are a cause of Muir-Torre syndrome (MTS). Defects in MLH1 are a cause of susceptibility to endometrial cancer. Western blot analysis with an MLH1 antibody detected a 85-100 kDa band. Full-length human MLH1 is specifically cleaved into degradation products of 40-45 kDa by caspase-3 (PMID: 15087450, PMID: 19603033). This antibody is specific to MLH1.

Storage

Storage:

Store at -80°C.

The product is shipped with ice packs. Upon receipt, store it immediately at -80°C

Storage Buffer:

PBS Only

For technical support and original validation data for this product please contact:

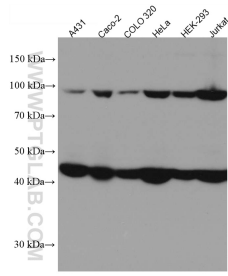
T: 4006900926

E: Proteintech-CN@ptglab.com

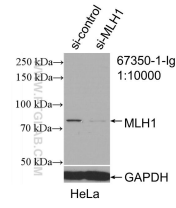
W: ptgcn.com

This product is exclusively available under Proteintech Group brand and is not available to purchase from any other manufacturer.

Selected Validation Data



Various lysates were subjected to SDS PAGE followed by western blot with 67350-1-Ig (MLH1 antibody) at dilution of 1:10000 incubated at room temperature for 1.5 hours. This data was developed using the same antibody clone with 67350-1-PBS in a different storage buffer formulation.



WB result of MLH1 antibody (67350-1-Ig: 1:10000; incubated at room temperature for 1.5 hours) with sh-Control and sh-MLH1 transfected HeLa cells. This data was developed using the same antibody clone with 67350-1-PBS in a different storage buffer formulation.