

For Research Use Only

# SEC63 Monoclonal antibody, PBS Only



Catalog Number: 67352-1-PBS

## Basic Information

<b>Catalog Number:</b> 67352-1-PBS	<b>GenBank Accession Number:</b> BC047221	<b>Purification Method:</b> Protein G purification
<b>Size:</b> 1 mg/ml	<b>GeneID (NCBI):</b> 11231	<b>CloneNo.:</b> 1C10E1
<b>Source:</b> Mouse	<b>UNIPROT ID:</b> Q9UGP8	
<b>Isotype:</b> IgG1	<b>Full Name:</b> SEC63 homolog (S. cerevisiae)	
<b>Immunogen Catalog Number:</b> AG5783	<b>Calculated MW:</b> 88 kDa	
	<b>Observed MW:</b> 90 kDa	

## Applications

**Tested Applications:**  
WB, IF, ELISA

**Species Specificity:**  
Human

## Background Information

SEC63 is an integral ER membrane protein. SEC63 and SEC62 form a dimeric complex and play a central role in translocation of nascent and newly synthesized precursor polypeptides into the ER. Mutations in the gene encoding SEC63 cause polycystic liver disease in humans. The intact SEC63 protein is usually detected around 83-90 kDa, while smaller cleavage products can be observed by autophagy proteolysis (PMID: 25052096)

## Storage

**Storage:**  
Store at -80°C.  
**The product is shipped with ice packs. Upon receipt, store it immediately at -80°C**

**Storage Buffer:**  
PBS only

For technical support and original validation data for this product please contact:

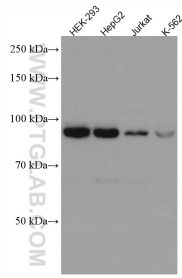
T: 4006900926

E: [Proteintech-CN@ptglab.com](mailto:Proteintech-CN@ptglab.com)

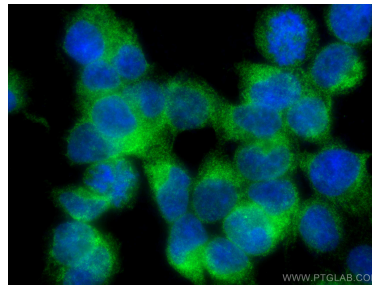
W: [ptgcn.com](http://ptgcn.com)

**This product is exclusively available under Proteintech Group brand and is not available to purchase from any other manufacturer.**

## Selected Validation Data



Various lysates were subjected to SDS PAGE followed by western blot with 67352-1-Ig (SEC63 antibody) at dilution of 1:20000 incubated at room temperature for 1.5 hours. This data was developed using the same antibody clone with 67352-1-PBS in a different storage buffer formulation.



Immunofluorescent analysis of (4% PFA) fixed HEK-293 cells using SEC63 antibody (67352-1-Ig, Clone: 1C10E1) at dilution of 1:400 and CoraLite®488-Conjugated AffiniPure Goat Anti-Mouse IgG(H+L). This data was developed using the same antibody clone with 67352-1-PBS in a different storage buffer formulation.