

For Research Use Only

Red fluorescent protein Monoclonal antibody



Catalog Number: 67378-1-Ig **6 Publications**

Basic Information

Catalog Number:

67378-1-Ig

Size:

2200 μ g/ml

Source:

Mouse

Isotype:

IgG2b

Immunogen Catalog Number:

AG27669

GenBank Accession Number:

GeneID (NCBI):

UNIPROT ID:

Q8ISF8

Full Name:

Calculated MW:

26 kDa

Purification Method:

Protein A purification

CloneNo.:

1E3C5

Recommended Dilutions:

WB 1:5000-1:100000

Applications

Tested Applications:

WB, ELISA

Cited Applications:

WB, IF

Species Specificity:

Recombinant Protein

Cited Species:

yeast, mouse

Positive Controls:

WB : ag27669,

Background Information

Red fluorescent proteins (RFPs) is a collective term referring to a heterogenous group of red chromophore-carrying proteins, originating from various species and forming different protein lineages. The original RFP (dsRed) is a 225 amino acid fluorescent protein (25.9 kDa) derived from *Discosoma* sp.. It emits red light with a peak wavelength of 593 nm upon excitation by green light (excitation peak at 558 nm). When fused with other proteins, RFP serves as a versatile reporter protein e.g. for quantifying expression levels or facilitates visualization of subcellular localization through fluorescence microscopy. This antibody is a mouse (IgG2b) monoclonal antibody raised against RFP (eqFP611). It can be used to detect RFPs from eqFP611 and eqFP578 lineages.

Notable Publications

Author	Pubmed ID	Journal	Application
Runmin Che	36449354	Autophagy	WB
Jens Tilsner	35987858	Mol Plant Pathol	WB
Kazuhiro Hasegawa	38928090	Int J Mol Sci	WB

Storage

Storage:

Store at -20°C. Stable for one year after shipment.

Storage Buffer:

PBS with 0.02% sodium azide and 50% glycerol pH 7.3.

Aliquoting is unnecessary for -20°C storage

For technical support and original validation data for this product please contact:

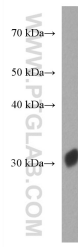
T: 4006900926

E: Proteintech-CN@ptglab.com

W: ptgcn.com

This product is exclusively available under Proteintech Group brand and is not available to purchase from any other manufacturer.

Selected Validation Data



RFP tagged protein were subjected to SDS PAGE followed by western blot with 67378-1-Ig (RFP antibody) at dilution of 1:80000 incubated at room temperature for 1.5 hours.