

For Research Use Only

SEC11A Monoclonal antibody, PBS Only (Capture)

Catalog Number: 67379-2-PBS



Basic Information

Catalog Number: 67379-2-PBS	GenBank Accession Number: BC000359	Purification Method: Protein G Magarose purification
Size: 1 mg/ml	GeneID (NCBI): 23478	CloneNo.: 1C3D2
Source: Mouse	UNIPROT ID: P67812	
Isotype: IgG1	Full Name: SEC11 homolog A (S. cerevisiae)	
Immunogen Catalog Number: AG6610	Calculated MW: 21 kDa	

Applications

Tested Applications:
Cytometric bead array, Indirect ELISA

Species Specificity:
human

Background Information

Storage

Storage:
Store at -80°C.
The product is shipped with ice packs. Upon receipt, store it immediately at -80°C

Storage Buffer:
PBS Only

For technical support and original validation data for this product please contact:

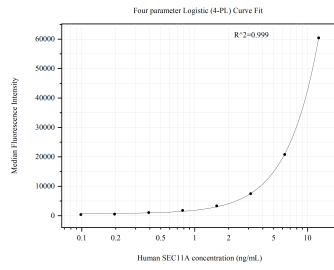
T: 4006900926

E: Proteintech-CN@ptglab.com

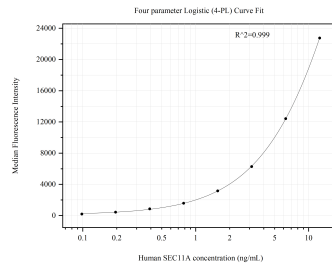
W: ptgcn.com

This product is exclusively available under Proteintech Group brand and is not available to purchase from any other manufacturer.

Selected Validation Data



Cytometric bead array standard curve of MP50880-1, SEC11A Monoclonal Matched Antibody Pair, PBS Only. Capture antibody: 67379-2-PBS. Detection antibody: 67379-3-PBS. Standard:Ag6610. Range: 0.098-12.5 ng/mL



Cytometric bead array standard curve of MP50880-2, SEC11A Monoclonal Matched Antibody Pair, PBS Only. Capture antibody: 67379-2-PBS. Detection antibody: 67379-4-PBS. Standard:Ag6610. Range: 0.098-12.5 ng/mL