

For Research Use Only

# TUSC3 Monoclonal antibody, PBS Only



Catalog Number: 67382-1-PBS

Featured Product

## Basic Information

Catalog Number:

67382-1-PBS

Size:

1 mg/ml

Source:

Mouse

Isotype:

IgG1

Immunogen Catalog Number:

AG9197

GenBank Accession Number:

BC010370

GeneID (NCBI):

7991

UNIPROT ID:

Q13454

Full Name:

tumor suppressor candidate 3

Calculated MW:

347 aa, 40 kDa

Observed MW:

35 kDa

Purification Method:

Protein G purification

CloneNo.:

1D3G12

## Applications

Tested Applications:

WB, Indirect ELISA

Species Specificity:

Human

## Background Information

TUSC3 (tumor suppressor candidate 3), originally named N33, is a potential tumor suppressor gene. Decreased expression of TUSC3 has been found in various cancers, including prostate cancer, pancreas cancer and ovary cancer. TUSC3 also known as OST3A, is identified as a part of the oligosaccharyl-transferase (OST) complex and plays a crucial role in protein N-glycosylation. TUSC3 mutations have been found in families with non-syndromic autosomal recessive mental retardation.

## Storage

Storage:

Store at -80°C.

Storage Buffer:

PBS Only

For technical support and original validation data for this product please contact:

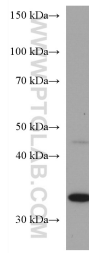
T: 4006900926

E: [Proteintech-CN@ptglab.com](mailto:Proteintech-CN@ptglab.com)

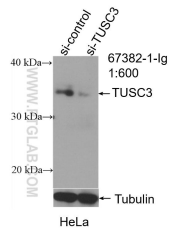
W: [ptgcn.com](http://ptgcn.com)

This product is exclusively available under Proteintech Group brand and is not available to purchase from any other manufacturer.

## Selected Validation Data



HeLa cells were subjected to SDS PAGE followed by western blot with 67382-1-Ig (TUSC3 antibody) at dilution of 1:3000 incubated at room temperature for 1.5 hours. This data was developed using the same antibody clone with 67382-1-PBS in a different storage buffer formulation.



WB result of TUSC3 antibody (67382-1-Ig; 1:600; incubated at room temperature for 1.5 hours) with sh-Control and sh-TUSC3 transfected hela cells. This data was developed using the same antibody clone with 67382-1-PBS in a different storage buffer formulation.