

For Research Use Only

Profilin 1 Monoclonal antibody, PBS Only



Catalog Number: 67390-1-PBS

Featured Product

Basic Information

Catalog Number:

67390-1-PBS

Size:

1 mg/ml

Source:

Mouse

Isotype:

IgG2b

Immunogen Catalog Number:

AG29206

GenBank Accession Number:

BC006768

GeneID (NCBI):

5216

UNIPROT ID:

P07737

Full Name:

profilin 1

Calculated MW:

140 aa, 15 kDa

Observed MW:

13 kDa

Purification Method:

Protein A purification

CloneNo.:

3A12E8

Applications

Tested Applications:

WB, Indirect ELISA, IHC, IF

Species Specificity:

Human, Mouse, Rat

Background Information

Profilin-1 (PFN1) plays an important role in the control of actin dynamics, and could represent an important therapeutic target in several diseases. PFN1 is identified as a huntingtin aggregation inhibitor, and may serve as a tumor-suppressor. PFN1 is crucial for the conversion of monomeric (G)-actin to filamentous (F)-actin. Amyotrophic lateral sclerosis (ALS) is a late-onset neurodegenerative disorder resulting from motor neuron death. Cells expressing PFN1 mutants contain ubiquitinated, insoluble aggregates that in many cases contain the ALS-associated protein TDP-43. Recently, PFN1 is a potential biomarker for bladder cancer aggressiveness and may be of great clinical importance.

Storage

Storage:

Store at -80°C.

Storage Buffer:

PBS Only

For technical support and original validation data for this product please contact:

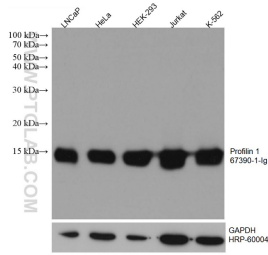
T: 4006900926

E: Proteintech-CN@ptglab.com

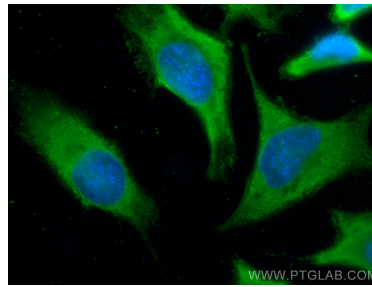
W: ptgcn.com

This product is exclusively available under Proteintech Group brand and is not available to purchase from any other manufacturer.

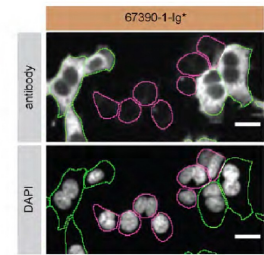
Selected Validation Data



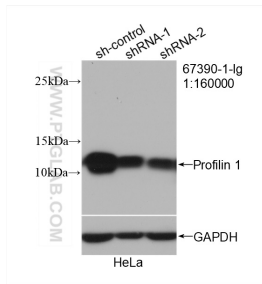
Various lysates were subjected to SDS PAGE followed by western blot with 67390-1-Ig (Profilin 1 antibody) at dilution of 1:20000 incubated at room temperature for 1.5 hours. The membrane was stripped and reblotted with HRP-conjugated GAPDH Monoclonal antibody (HRP-60004) as loading control. This data was developed using the same antibody clone with 67390-1-PBS in a different storage buffer formulation.



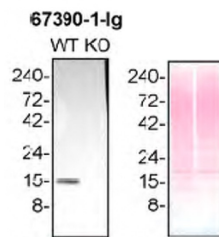
Immunofluorescent analysis of (-20°C Methanol) fixed HeLa cells using Profilin 1 antibody (67390-1-Ig, Clone: 3A12E8) at dilution of 1:800 and CoraLite@488-Conjugated AffiniPure Goat Anti-Mouse IgG(H+L). This data was developed using the same antibody clone with 67390-1-PBS in a different storage buffer formulation.



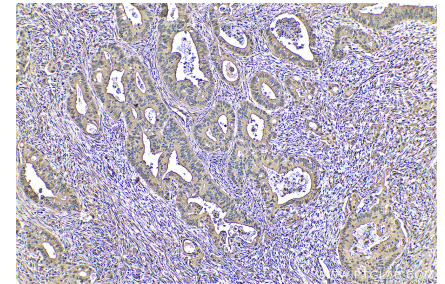
HAP1 WT cells (green outline) and PFN1 KO cells (magenta outline) labelled with a green or a far-red fluorescence dye, respectively. Cells with 4% PFA and stained with 67390-1-Ig at 1.0 μ g/ml plus DAPI. Bars = 10 μ m. Data provided by YCharOS, an open science company with a mission to validate commercial antibodies to improve scientific reproducibility and transparency. This data was developed using the same antibody clone with 67390-1-PBS in a different storage buffer



WB result of Profilin 1 antibody (67390-1-Ig; 1:160000; incubated at room temperature for 1.5 hours) with sh-Control and sh-Profilin 1 transfected HeLa cells. This data was developed using the same antibody clone with 67390-1-PBS in a different storage buffer formulation.



HAP1 (WT and PFN1 KO) lysates prepared with NP-40 buffer, 50 μ g protein loaded. 67390-1-Ig incubated at 1:30,000 at 4°C overnight in 5% milk in TBST. Ponceau stained transfers shown on right. Data provided by YCharOS, an open science company with a mission to validate commercial antibodies to improve scientific reproducibility and transparency. This data was developed using the same antibody clone with 67390-1-PBS in a different storage buffer formulation.



Immunohistochemical analysis of paraffin-embedded human colon cancer tissue slide using 67390-1-Ig (Profilin 1 antibody) at dilution of 1:8000 (under 10x lens). Heat mediated antigen retrieval with Tris-EDTA buffer (pH 9.0). This data was developed using the same antibody clone with 67390-1-PBS in a different storage buffer formulation.