

For Research Use Only

FGL1 Monoclonal antibody, PBS Only



Catalog Number: 67391-1-PBS

Basic Information

Catalog Number: 67391-1-PBS	GenBank Accession Number: BC007047	Purification Method: Protein G purification
Size: 1 mg/ml	GeneID (NCBI): 2267	CloneNo.: 2B11C6
Source: Mouse	UNIPROT ID: Q08830	
Isotype: IgG1	Full Name: fibrinogen-like 1	
Immunogen Catalog Number: AG8581	Calculated MW: 312 aa, 36 kDa	
	Observed MW: 36 kDa	

Applications

Tested Applications:
WB, IF, IHC, Indirect ELISA

Species Specificity:
Human, pig

Background Information

Fibrinogen-like 1 (FGL1), also termed hepatocyte-derived fibrinogen-related protein 1 (HFREP1) or hepassocin, is a predominantly liver expressed protein that has been implicated as both a hepatoprotectant and a hepatocyte mitogen. FGL1 expression is decreased in hepatocellular carcinoma (HCC), and it may play a role in the development of hepatocellular carcinomas.

Storage

Storage:
Store at -80°C.
The product is shipped with ice packs. Upon receipt, store it immediately at -80°C

Storage Buffer:
PBS Only

For technical support and original validation data for this product please contact:

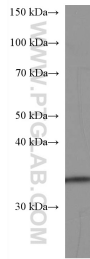
T: 4006900926

E: Proteintech-CN@ptglab.com

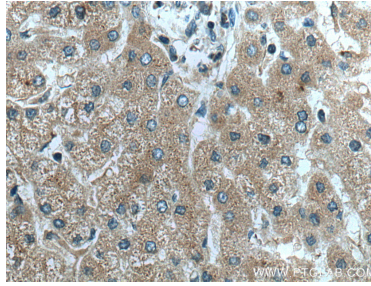
W: ptgcn.com

This product is exclusively available under Proteintech Group brand and is not available to purchase from any other manufacturer.

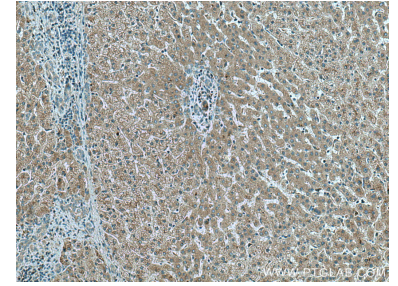
Selected Validation Data



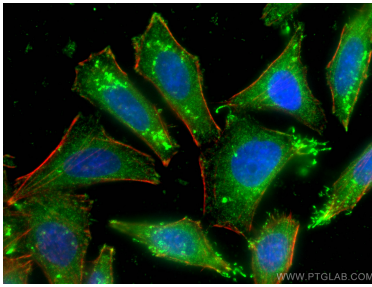
pig liver tissue were subjected to SDS PAGE followed by western blot with 67391-1-Ig (FGL1 antibody) at dilution of 1:2700 incubated at room temperature for 1.5 hours. This data was developed using the same antibody clone with 67391-1-PBS in a different storage buffer formulation.



Immunohistochemical analysis of paraffin-embedded human liver tissue slide using 67391-1-Ig (FGL1 antibody) at dilution of 1:1000 (under 40x lens). Heat mediated antigen retrieval with Tris-EDTA buffer (pH 9.0). This data was developed using the same antibody clone with 67391-1-PBS in a different storage buffer formulation.



Immunohistochemical analysis of paraffin-embedded human liver tissue slide using 67391-1-Ig (FGL1 antibody) at dilution of 1:1000 (under 10x lens). Heat mediated antigen retrieval with Tris-EDTA buffer (pH 9.0). This data was developed using the same antibody clone with 67391-1-PBS in a different storage buffer formulation.



Immunofluorescent analysis of (-20°C Ethanol) fixed HepG2 cells using FGL1 antibody (67391-1-Ig, Clone: 2B11C6) at dilution of 1:400 and CoraLite@488-Conjugated AffiniPure Goat Anti-Mouse IgG(H+L), CL594-Phalloidin (red). This data was developed using the same antibody clone with 67391-1-PBS in a different storage buffer formulation.