

For Research Use Only

PPP4R1 Monoclonal antibody, PBS Only



Catalog Number: 67392-1-PBS

Basic Information

Catalog Number: 67392-1-PBS	GenBank Accession Number: BC060829	Purification Method: Protein G purification
Size: 1 mg/ml	GeneID (NCBI): 9989	CloneNo.: 3D12G12
Source: Mouse	UNIPROT ID: Q8TF05	
Isotype: IgG1	Full Name: protein phosphatase 4, regulatory subunit 1	
Immunogen Catalog Number: AG26750	Calculated MW: 107 kDa	
	Observed MW: 120-130 kDa	

Applications

Tested Applications:
WB, Indirect ELISA, IHC, IF, FC

Species Specificity:
Human, Mouse, Rat

Background Information

Storage

Storage:
Store at -80°C.
Storage Buffer:
PBS Only

For technical support and original validation data for this product please contact:

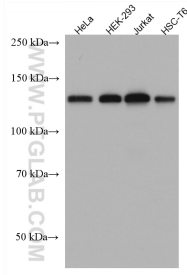
T: 4006900926

E: Proteintech-CN@ptglab.com

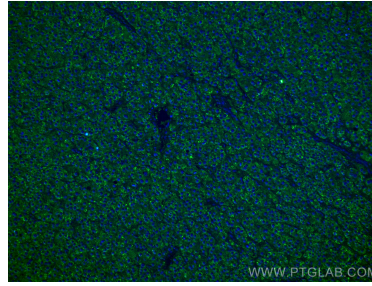
W: ptgcn.com

This product is exclusively available under Proteintech Group brand and is not available to purchase from any other manufacturer.

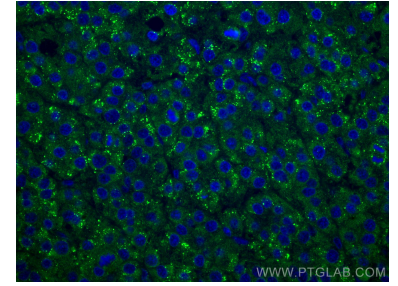
Selected Validation Data



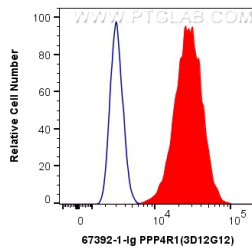
Various lysates were subjected to SDS PAGE followed by western blot with 67392-1-Ig (PPP4R1 antibody) at dilution of 1:3000 incubated at room temperature for 1.5 hours. This data was developed using the same antibody clone with 67392-1-PBS in a different storage buffer formulation.



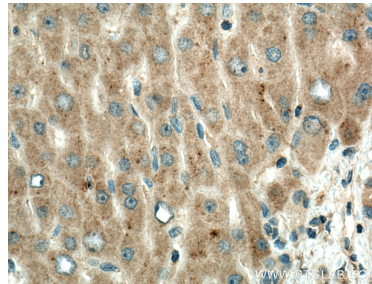
Immunofluorescent analysis of (4% PFA) fixed human liver cancer tissue using PPP4R1 antibody (67392-1-Ig, Clone: 3D12G12) at dilution of 1:400 and CoraLite®488-Conjugated AffiniPure Goat Anti-Mouse IgG(H+L). This data was developed using the same antibody clone with 67392-1-PBS in a different storage buffer formulation.



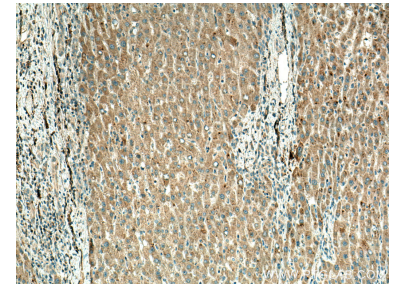
Immunofluorescent analysis of (4% PFA) fixed human liver cancer tissue using PPP4R1 antibody (67392-1-Ig, Clone: 3D12G12) at dilution of 1:400 and CoraLite®488-Conjugated AffiniPure Goat Anti-Mouse IgG(H+L). This data was developed using the same antibody clone with 67392-1-PBS in a different storage buffer formulation.



1X10⁶ HeLa cells were intracellularly stained with 0.4 ug Anti-Human PPP4R1 (67392-1-Ig, Clone:3D12G12) and CoraLite®488-Conjugated AffiniPure Goat Anti-Mouse IgG(H+L) at dilution 1:1000 (red), or 0.4 ug Control Antibody. Cells were fixed with 4% PFA and permeabilized with Flow Cytometry Perm Buffer (PF00011-C). This data was developed using the same antibody clone with 67392-1-PBS in a different storage buffer formulation.



Immunohistochemical analysis of paraffin-embedded human liver cancer tissue slide using 67392-1-Ig (PPP4R1 antibody) at dilution of 1:500 (under 40x lens). Heat mediated antigen retrieval with Tris-EDTA buffer (pH 9.0). This data was developed using the same antibody clone with 67392-1-PBS in a different storage buffer formulation.



Immunohistochemical analysis of paraffin-embedded human liver cancer tissue slide using 67392-1-Ig (PPP4R1 antibody) at dilution of 1:500 (under 10x lens). Heat mediated antigen retrieval with Tris-EDTA buffer (pH 9.0). This data was developed using the same antibody clone with 67392-1-PBS in a different storage buffer formulation.