

For Research Use Only

RBM39 Monoclonal antibody, PBS Only



Catalog Number: 67420-1-PBS

Basic Information

Catalog Number: 67420-1-PBS	GenBank Accession Number: BC141835	Purification Method: Protein A purification
Size: 1 mg/ml	GeneID (NCBI): 9584	CloneNo.: 2D2C8
Source: Mouse	UNIPROT ID: Q14498	
Isotype: IgG2b	Full Name: RNA binding motif protein 39	
Immunogen Catalog Number: AG15766	Calculated MW: 530 aa, 59 kDa	
	Observed MW: 60-66 kDa	

Applications

Tested Applications:
WB, Indirect ELISA, IHC, IF

Species Specificity:
Human, mouse, rat

Background Information

RBM39, also named as HCC1 or RNPC2, is a 530 amino acid protein, which contains three RRM (RNA recognition motif) domains and belongs to the splicing factor SR family. RBM39 is widely expressed in various tissues and with highly expression in pancreas, skeletal muscle, lung and brain. RBM39 is a transcriptional coactivator for steroid nuclear receptors ESR1/ER- α and ESR2/ER- β , and JUN/AP-1. RBM39 may be involved in pre-mRNA splicing process.

Storage

Storage:
Store at -80°C .
The product is shipped with ice packs. Upon receipt, store it immediately at -80°C

Storage Buffer:
PBS Only

For technical support and original validation data for this product please contact:

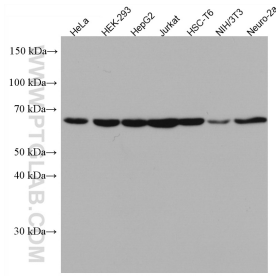
T: 4006900926

E: Proteintech-CN@ptglab.com

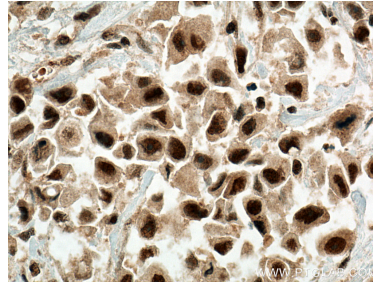
W: ptgcn.com

This product is exclusively available under Proteintech Group brand and is not available to purchase from any other manufacturer.

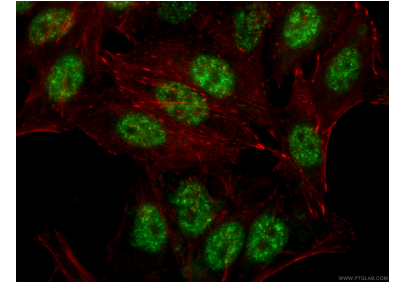
Selected Validation Data



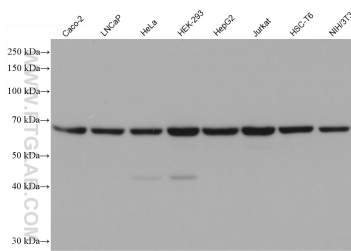
Various lysates were subjected to SDS PAGE followed by western blot with 67420-1-Ig (RBM39 antibody) at dilution of 1:2500 incubated at room temperature for 1.5 hours. This data was developed using the same antibody clone with 67420-1-PBS in a different storage buffer formulation.



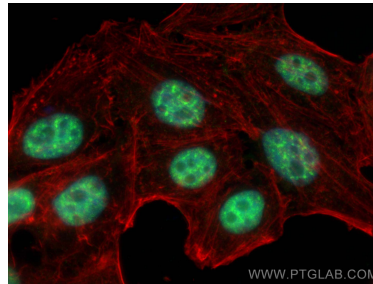
Immunohistochemical analysis of paraffin-embedded human breast cancer tissue slide using 67420-1-Ig (RBM39 antibody) at dilution of 1:300 (under 40x lens). Heat mediated antigen retrieval with Tris-EDTA buffer (pH 9.0). This data was developed using the same antibody clone with 67420-1-PBS in a different storage buffer formulation.



Immunofluorescent analysis of (-20°C Ethanol) fixed HepG2 cells using 67420-1-Ig (RBM39 antibody), at dilution of 1:200 and CoraLite® 488-Conjugated AffiniPure Goat Anti-Mouse IgG(H+L). This data was developed using the same antibody clone with 67420-1-PBS in a different storage buffer formulation.



Various lysates were subjected to SDS PAGE followed by western blot with 67420-1-Ig (RBM39 antibody) at dilution of 1:10000 incubated at room temperature for 1.5 hours. This data was developed using the same antibody clone with 67420-1-PBS in a different storage buffer formulation.



Immunofluorescent analysis of (4% PFA) fixed HepG2 cells using RBM39 antibody (67420-1-Ig, Clone: 2D2C8) at dilution of 1:2000 and CoraLite® 488-Conjugated AffiniPure Goat Anti-Mouse IgG(H+L), CL594-phalloidin (red). This data was developed using the same antibody clone with 67420-1-PBS in a different storage buffer formulation.