

For Research Use Only

CYP21A2 Monoclonal antibody, PBS Only



Catalog Number: 67421-1-PBS

Basic Information

Catalog Number:

67421-1-PBS

Size:

1mg/ml

Source:

Mouse

Isotype:

IgG1

Immunogen Catalog Number:

AG26292

GenBank Accession Number:

NM_000500

GeneID (NCBI):

1589

UNIPROT ID:

P08686

Full Name:

cytochrome P450, family 21,
subfamily A, polypeptide 2

Calculated MW:

56 kDa

Observed MW:

53-56 kDa

Purification Method:

Protein A purification

CloneNo.:

1G2G6

Applications

Tested Applications:

WB, IF, Indirect ELISA

Species Specificity:

Human, Pig

Background Information

Storage

Storage:

Store at -80°C.

The product is shipped with ice packs. Upon receipt, store it immediately at -80°C

Storage Buffer:

PBS Only

For technical support and original validation data for this product please contact:

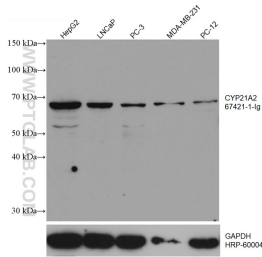
T: 4006900926

E: Proteintech-CN@ptglab.com

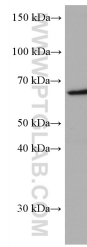
W: ptgcn.com

This product is exclusively available under Proteintech Group brand and is not available to purchase from any other manufacturer.

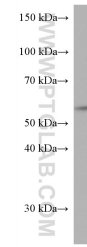
Selected Validation Data



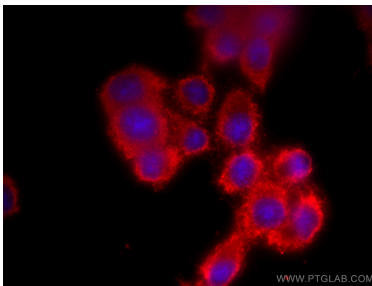
Various lysates were subjected to SDS PAGE followed by western blot with 67421-1-Ig (CYP21A2 antibody) at dilution of 1:5000 incubated at room temperature for 1.5 hours. The membrane was stripped and reblotted with HRP-conjugated GAPDH Monoclonal antibody (HRP-60004) as loading control. This data was developed using the same antibody clone with 67421-1-PBS in a different storage buffer formulation.



PC-12 cells were subjected to SDS PAGE followed by western blot with 67421-1-Ig (CYP21A2 antibody) at dilution of 1:3000 incubated at room temperature for 1.5 hours. This data was developed using the same antibody clone with 67421-1-PBS in a different storage buffer formulation.



pig adrenal gland tissue were subjected to SDS PAGE followed by western blot with 67421-1-Ig (CYP21A2 antibody) at dilution of 1:3000 incubated at room temperature for 1.5 hours. This data was developed using the same antibody clone with 67421-1-PBS in a different storage buffer formulation.



Immunofluorescent analysis of (-20°C Methanol) fixed PC-12 cells using CYP21A2 antibody (67421-1-Ig, Clone: 1G2G6) at dilution of 1:800 and CoraLite®594-Conjugated AffiniPure Goat Anti-Mouse IgG(H+L). This data was developed using the same antibody clone with 67421-1-PBS in a different storage buffer formulation.