

For Research Use Only

Sam50 Monoclonal antibody, PBS Only



Catalog Number: 67425-1-PBS

Basic Information

Catalog Number:

67425-1-PBS

Size:

1 mg/ml

Source:

Mouse

Isotype:

IgG1

Immunogen Catalog Number:

AG15155

GenBank Accession Number:

BC007830

GeneID (NCBI):

25813

UNIPROT ID:

Q9Y512

Full Name:

sorting and assembly machinery component 50 homolog (S. cerevisiae)

Calculated MW:

469 aa, 52 kDa

Observed MW:

52 kDa

Purification Method:

Protein A purification

CloneNo.:

2H6H9

Applications

Tested Applications:

WB,IHC,IF,ELISA

Species Specificity:

Human, Pig, Rat, Mouse

Background Information

Sam50, encoded by the SAMM50 gene, is an essential protein of the mitochondrial outer membrane (OMM). It contains a beta-barrel domain conserved from bacteria to man (PMID: 14570913). Sam50 is a part of the sorting and assembly machinery (SAM) necessary for the assembly of beta-barrel proteins in the OMM (PMID: 22252321). It is crucial for maintaining mitochondrial shape, morphology of mitochondrial cristae, and assembly of the mitochondrial respiratory chain complexes (PMID: 26587038; 22252321; 25781180). Polymorphisms in the SAMM50 gene have been associated with development and progression of nonalcoholic fatty liver disease (PMID: 23535911).

Storage

Storage:

Store at -80°C.

Storage Buffer:

PBS only

For technical support and original validation data for this product please contact:

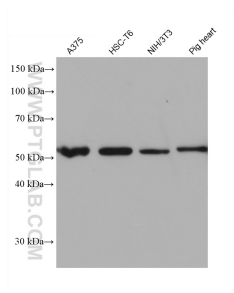
T: 4006900926

E: Proteintech-CN@ptglab.com

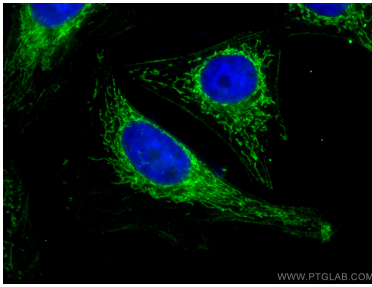
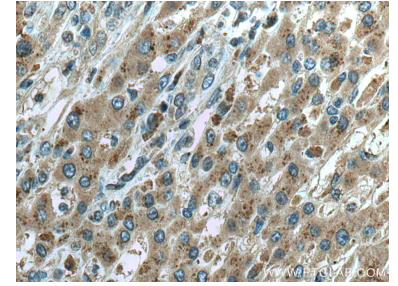
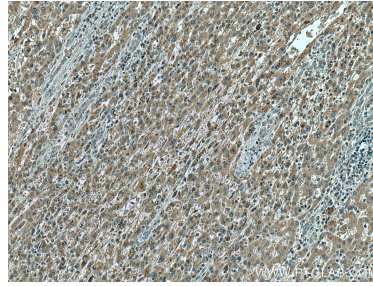
W: ptgcn.com

This product is exclusively available under Proteintech Group brand and is not available to purchase from any other manufacturer.

Selected Validation Data



Various lysates were subjected to SDS PAGE followed by western blot with 67425-1-Ig (Sam50 antibody) at dilution of 1:2500 incubated at room temperature for 1.5 hours. This data was developed using the same antibody clone with 67425-1-PBS in a different storage buffer formulation.



Immunofluorescent analysis of (4% PFA) fixed HeLa cells using Sam50 antibody (67425-1-Ig, Clone: 2H6H9) at dilution of 1:400 and CoraLite®488-Conjugated AffiniPure Goat Anti-Mouse IgG(H+L), CL594-Phalloidin (red). This data was developed using the same antibody clone with 67425-1-PBS in a different storage buffer formulation.