

For Research Use Only

PPM1D Monoclonal antibody, PBS Only



Catalog Number: 67440-1-PBS

Basic Information

Catalog Number:

67440-1-PBS

Size:

1 mg/ml

Source:

Mouse

Isotype:

IgG1

Immunogen Catalog Number:

AG24761

GenBank Accession Number:

BC060877

GeneID (NCBI):

8493

UNIPROT ID:

O15297

Full Name:

protein phosphatase 1D magnesium-dependent, delta isoform

Observed MW:

67 kDa, 47 kDa

Purification Method:

Protein G purification

CloneNo.:

2D6D5

Applications

Tested Applications:

WB, Indirect ELISA, IHC, IF

Species Specificity:

Human, Mouse, Rat, Pig

Background Information

PPM1D (also known as PP2Cd and WIP1) is a member of the PPM family, which is characterized by Mg²⁺/Mn²⁺-dependent activity and relative insensitivity to okadaic acid. The PPM1D gene is aberrantly amplified in a range of common cancers and encodes a protein phosphatase that is a potential therapeutic target (PMID: 17700519). This antibody can be detected two bands of 47 and 67 Kda.

Storage

Storage:

Store at -80°C.

The product is shipped with ice packs. Upon receipt, store it immediately at -80°C

Storage Buffer:

PBS Only

For technical support and original validation data for this product please contact:

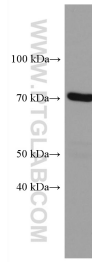
T: 4006900926

E: Proteintech-CN@ptglab.com

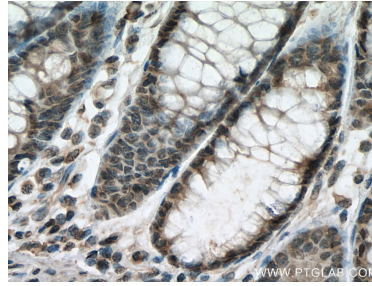
W: ptgcn.com

This product is exclusively available under Proteintech Group brand and is not available to purchase from any other manufacturer.

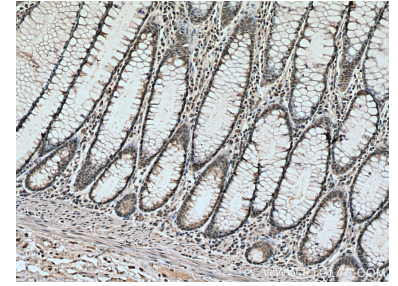
Selected Validation Data



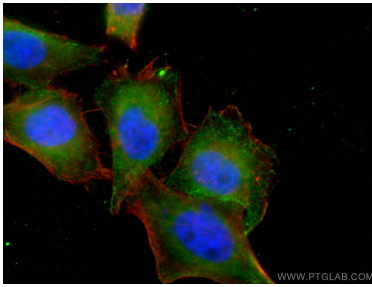
MCF-7 cells were subjected to SDS PAGE followed by western blot with 67440-1-Ig (PPM1D antibody) at dilution of 1:5000 incubated at room temperature for 1.5 hours. This data was developed using the same antibody clone with 67440-1-PBS in a different storage buffer formulation.



Immunohistochemical analysis of paraffin-embedded human colon cancer tissue slide using 67440-1-Ig (PPM1D antibody) at dilution of 1:200 (under 40x lens). Heat mediated antigen retrieval with Tris-EDTA buffer (pH 9.0). This data was developed using the same antibody clone with 67440-1-PBS in a different storage buffer formulation.



Immunohistochemical analysis of paraffin-embedded human colon cancer tissue slide using 67440-1-Ig (PPM1D antibody) at dilution of 1:200 (under 10x lens). Heat mediated antigen retrieval with Tris-EDTA buffer (pH 9.0). This data was developed using the same antibody clone with 67440-1-PBS in a different storage buffer formulation.



Immunofluorescent analysis of (4% PFA) fixed HepG2 cells using 67440-1-Ig (PPM1D antibody), at dilution of 1:200 and CoraLite®488-Conjugated AffiniPure Goat Anti-Mouse IgG(H+L). This data was developed using the same antibody clone with 67440-1-PBS in a different storage buffer formulation.