

For Research Use Only

MESDC2 Monoclonal antibody, PBS Only



Catalog Number: 67441-1-PBS

Basic Information

Catalog Number: 67441-1-PBS	GenBank Accession Number: BC009210	Purification Method: Protein A purification
Size: 1 mg/ml	GeneID (NCBI): 23184	CloneNo.: 1A2E7
Source: Mouse	UNIPROT ID: Q14696	
Isotype: IgG2a	Full Name: mesoderm development candidate 2	
Immunogen Catalog Number: AG1403	Calculated MW: 26 kDa	
	Observed MW: 26 kDa	

Applications

Tested Applications:
WB, Indirect ELISA, IHC, IF

Species Specificity:
Human

Background Information

Storage

Storage:
Store at -80°C.
The product is shipped with ice packs. Upon receipt, store it immediately at -80°C

Storage Buffer:
PBS Only

For technical support and original validation data for this product please contact:

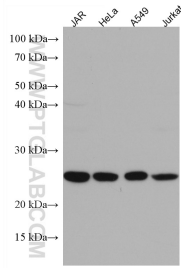
T: 4006900926

E: Proteintech-CN@ptglab.com

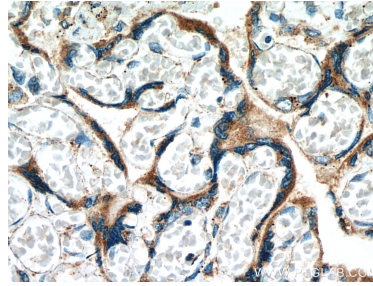
W: ptgcn.com

This product is exclusively available under Proteintech Group brand and is not available to purchase from any other manufacturer.

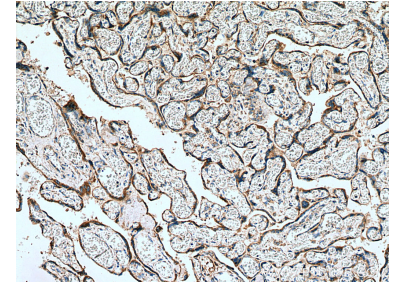
Selected Validation Data



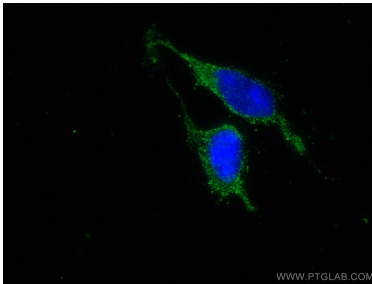
Various lysates were subjected to SDS PAGE followed by western blot with 67441-1-Ig (MESDC2 antibody) at dilution of 1:2000 incubated at room temperature for 1.5 hours. This data was developed using the same antibody clone with 67441-1-PBS in a different storage buffer formulation.



Immunohistochemical analysis of paraffin-embedded human placenta tissue slide using 67441-1-Ig (MESDC2 antibody) at dilution of 1:2000 (under 40x lens). Heat mediated antigen retrieval with Tris-EDTA buffer (pH 9.0). This data was developed using the same antibody clone with 67441-1-PBS in a different storage buffer formulation.



Immunohistochemical analysis of paraffin-embedded human placenta tissue slide using 67441-1-Ig (MESDC2 antibody) at dilution of 1:2000 (under 10x lens). Heat mediated antigen retrieval with Tris-EDTA buffer (pH 9.0). This data was developed using the same antibody clone with 67441-1-PBS in a different storage buffer formulation.



Immunofluorescent analysis of (-20°C Ethanol) fixed HEK-293 cells using MESDC2 antibody (67441-1-Ig, Clone: 1A2E7) at dilution of 1:400 and CoraLite®488-Conjugated AffiniPure Goat Anti-Mouse IgG(H+L). This data was developed using the same antibody clone with 67441-1-PBS in a different storage buffer formulation.