

For Research Use Only

# MTH1 Monoclonal antibody, PBS Only (Capture)

Catalog Number: 67443-1-PBS



## Basic Information

<b>Catalog Number:</b> 67443-1-PBS	<b>GenBank Accession Number:</b> BC014618	<b>Purification Method:</b> Protein A purification
<b>Size:</b> 1mg/ml	<b>GeneID (NCBI):</b> 4521	<b>CloneNo.:</b> 2D7G4
<b>Source:</b> Mouse	<b>UNIPROT ID:</b> P36639	
<b>Isotype:</b> IgG1	<b>Full Name:</b> nudix (nucleoside diphosphate linked moiety X)-type motif 1	
<b>Immunogen Catalog Number:</b> AG9802	<b>Calculated MW:</b> 179aa,20 kDa; 197aa,23 kDa	
	<b>Observed MW:</b> 19 kDa	

## Applications

**Tested Applications:**  
WB, IHC, Cytometric bead array, Indirect ELISA

**Species Specificity:**  
human, mouse

## Background Information

MTH1, also known as NUDT1 or 8-Oxo-dGTPase, is an important repair enzyme that prevents oxidative stress-induced DNA damage through hydrolyzing mutagenic 8-oxo-dGTP into 8-oxo-dGMP. MTH1 is expressed in postmitotic neurons as well as in proliferative tissues, and it is localized both in the mitochondria and nucleus. MTH1 might be a useful marker of oxidative stress and its level increased upon oxidative stress. Increased expression of MTH1 were also found in various cancer tissues and neurodegenerative diseases.

## Storage

**Storage:**  
Store at -80°C.  
**The product is shipped with ice packs. Upon receipt, store it immediately at -80°C**

**Storage Buffer:**  
PBS Only

For technical support and original validation data for this product please contact:

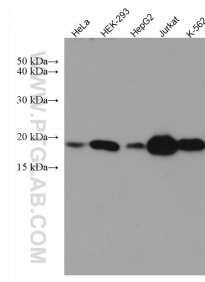
T: 4006900926

E: [Proteintech-CN@ptglab.com](mailto:Proteintech-CN@ptglab.com)

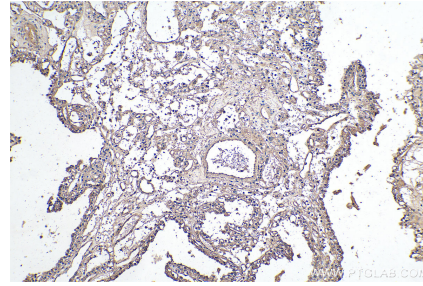
W: [ptgcn.com](http://ptgcn.com)

**This product is exclusively available under Proteintech Group brand and is not available to purchase from any other manufacturer.**

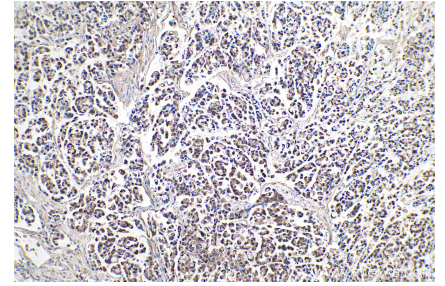
## Selected Validation Data



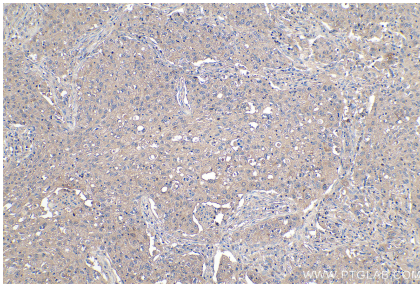
Various lysates were subjected to SDS PAGE followed by western blot with 67443-1-Ig (MTH1 antibody) at dilution of 1:5000 incubated at room temperature for 1.5 hours. This data was developed using the same antibody clone with 67443-1-PBS in a different storage buffer formulation.



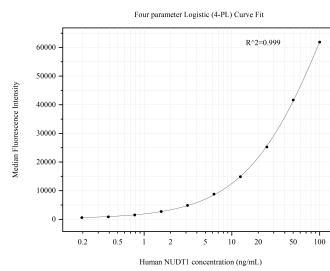
Immunohistochemical analysis of paraffin-embedded human renal cell carcinoma tissue slide using 67443-1-Ig (MTH1 antibody) at dilution of 1:4000 (under 10x lens). Heat mediated antigen retrieval with Tris-EDTA buffer (pH 9.0). This data was developed using the same antibody clone with 67443-1-PBS in a different storage buffer formulation.



Immunohistochemical analysis of paraffin-embedded human colon cancer tissue slide using 67443-1-Ig (MTH1 antibody) at dilution of 1:4000 (under 10x lens). Heat mediated antigen retrieval with Tris-EDTA buffer (pH 9.0). This data was developed using the same antibody clone with 67443-1-PBS in a different storage buffer formulation.



Immunohistochemical analysis of paraffin-embedded human lung cancer tissue slide using 67443-1-Ig (MTH1 antibody) at dilution of 1:4000 (under 10x lens). Heat mediated antigen retrieval with Tris-EDTA buffer (pH 9.0). This data was developed using the same antibody clone with 67443-1-PBS in a different storage buffer formulation.



Cytometric bead array standard curve of MP50783-2, NUDT1 Monoclonal Matched Antibody Pair, PBS Only. Capture antibody: 67443-1-PBS. Detection antibody: 67443-4-PBS. Standard: Ag9802. Range: 0.195-100 ng/mL.