

For Research Use Only

OMA1 Monoclonal antibody, PBS Only



Catalog Number: 67449-1-PBS

Basic Information

Catalog Number: 67449-1-PBS	GenBank Accession Number: BC012915	Purification Method: Protein G purification
Size: 1 mg/ml	GeneID (NCBI): 115209	CloneNo.: 1H4D12
Source: Mouse	UNIPROT ID: Q96E52	
Isotype: IgG1	Full Name: OMA1 homolog, zinc metallopeptidase (<i>S. cerevisiae</i>)	
Immunogen Catalog Number: AG11201	Calculated MW: 524 aa, 60 kDa	
	Observed MW: 60 kDa	

Applications

Tested Applications:
WB, Indirect ELISA

Species Specificity:
Human, Mouse

Background Information

OMA1 (Overlapping with the m-AAA protease 1 homolog) is also named as MPRP1 (Metalloprotease-related protein 1) and belongs to the peptidase M48 family. It is a zinc metalloprotease that spans the inner mitochondrial membrane with a number of predicted membrane spanning domains and the 60 kDa form of OMA1 rapidly accumulated concomitantly with the cleavage of all OPA1 variants, and the 40 kDa form of OMA1 may be the inactive form, with the 60 kDa form being the active enzyme (PMID:20334834)

Storage

Storage:
Store at -80°C.

Storage Buffer:
PBS Only

For technical support and original validation data for this product please contact:

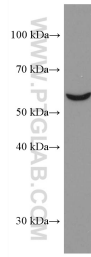
T: 4006900926

E: Proteintech-CN@ptglab.com

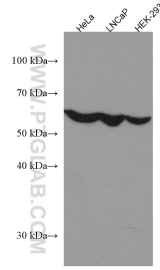
W: ptgcn.com

This product is exclusively available under Proteintech Group brand and is not available to purchase from any other manufacturer.

Selected Validation Data



NIH/3T3 cells were subjected to SDS PAGE followed by western blot with 67449-1-Ig (OMA1 antibody) at dilution of 1:3000 incubated at room temperature for 1.5 hours. This data was developed using the same antibody clone with 67449-1-PBS in a different storage buffer formulation.



Various lysates were subjected to SDS PAGE followed by western blot with 67449-1-Ig (OMA1 antibody) at dilution of 1:3000 incubated at room temperature for 1.5 hours. This data was developed using the same antibody clone with 67449-1-PBS in a different storage buffer formulation.