

For Research Use Only

ALDOA Monoclonal antibody, PBS Only



Catalog Number: 67453-1-PBS

Basic Information

Catalog Number: 67453-1-PBS	GenBank Accession Number: BC016800	Purification Method: Protein A purification
Size: 4183 µg/ml	GeneID (NCBI): 226	CloneNo.: 1D6C2
Source: Mouse	UNIPROT ID: P04075	
Isotype: IgG1	Full Name: aldolase A, fructose-bisphosphate	
Immunogen Catalog Number: AG17952	Calculated MW: 39 kDa	
	Observed MW: 35-40 kDa	

Applications

Tested Applications:
WB, IF, IHC, ELISA

Species Specificity:
Human, Mouse, Rat

Background Information

ALDOA (Fructose-bisphosphate aldolase A) is also named as lung cancer antigen NY-LU-1, muscle-type aldolase, ALDA and belongs to the class I fructose-bisphosphate aldolase family. The ALDOA gene encodes a homotetrameric protein (PMID:14615364). It is found in skeletal muscle and red blood cells, and functions in glycolysis, promoting the reversible cleavage of FBP to triose phosphate, G-3-P and DHAP. ALDOA is upregulated in various cancers, including human lung squamous and renal cell carcinomas (PMID:19937139).

Storage

Storage:
Store at -80°C.
The product is shipped with ice packs. Upon receipt, store it immediately at -80°C

Storage Buffer:
PBS Only

For technical support and original validation data for this product please contact:

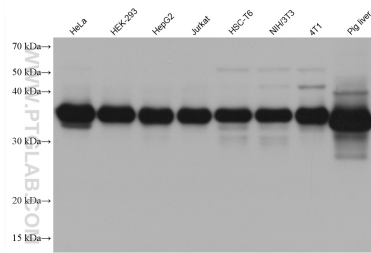
T: 4006900926

E: Proteintech-CN@ptglab.com

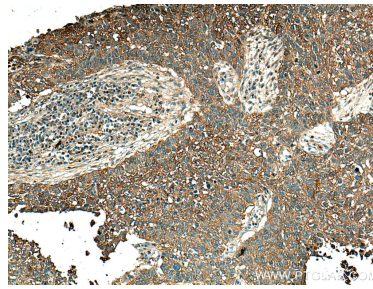
W: ptgcn.com

This product is exclusively available under Proteintech Group brand and is not available to purchase from any other manufacturer.

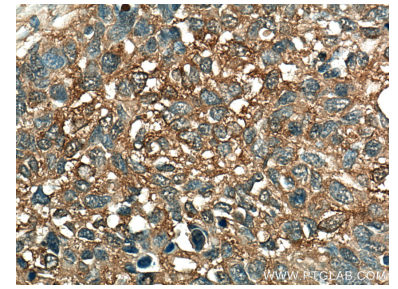
Selected Validation Data



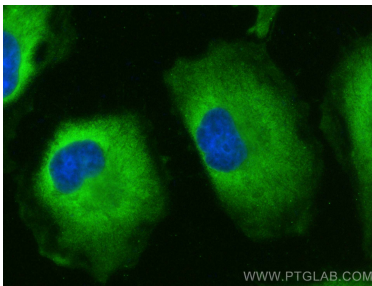
Various lysates were subjected to SDS PAGE followed by western blot with 67453-1-Ig (ALDOA antibody) at dilution of 1:20000 incubated at room temperature for 1.5 hours. This data was developed using the same antibody clone with 67453-1-PBS in a different storage buffer formulation.



Immunohistochemical analysis of paraffin-embedded human lung cancer tissue slide using 67453-1-Ig (ALDOA antibody) at dilution of 1:1000 (under 10x lens). Heat mediated antigen retrieval with Tris-EDTA buffer (pH 9.0). This data was developed using the same antibody clone with 67453-1-PBS in a different storage buffer formulation.



Immunohistochemical analysis of paraffin-embedded human lung cancer tissue slide using 67453-1-Ig (ALDOA antibody) at dilution of 1:1000 (under 40x lens). Heat mediated antigen retrieval with Tris-EDTA buffer (pH 9.0). This data was developed using the same antibody clone with 67453-1-PBS in a different storage buffer formulation.



Immunofluorescent analysis of (-20°C Ethanol) fixed HeLa cells using ALDOA antibody (67453-1-Ig, Clone: 1D6C2) at dilution of 1:400 and Multi-rAb CoraLite® Plus 488-Goat Anti-Mouse Recombinant Secondary Antibody (H+L) (RGAM002). This data was developed using the same antibody clone with 67453-1-PBS in a different storage buffer formulation.