

For Research Use Only

PLCL2 Monoclonal antibody, PBS Only



Catalog Number: 67471-1-PBS

Basic Information

Catalog Number: 67471-1-PBS	GenBank Accession Number: BC036392	Purification Method: Protein G purification
Size: 1 mg/ml	GeneID (NCBI): 23228	CloneNo.: 1C8A4
Source: Mouse	UNIPROT ID: Q9UPRO	
Isotype: IgG1	Full Name: phospholipase C-like 2	
Immunogen Catalog Number: AG11461	Calculated MW: 126 kDa	
	Observed MW: 126 kDa	

Applications

Tested Applications:
WB, Indirect ELISA, IF

Species Specificity:
Human, Rat, Mouse, Pig

Background Information

PLCL2, a novel phospholipase C-like protein, is expressed in lymphocytes and platelets. The expression of PLCL2 is associated with the proliferation of mature B cells in the immune system. PLCL2 is a new susceptibility loci for myocardial infarction. It has been shown that PLCL2 plays a key role in the pathogenesis of atherosclerosis and systemic sclerosis. There are three isoforms of PLCL2 protein and 67471-1-Ig antibody detects the 126 kDa band in SDS-PAGE. (PMID: 24916648, 25880423)

Storage

Storage:
Store at -80°C.

Storage Buffer:
PBS Only

For technical support and original validation data for this product please contact:

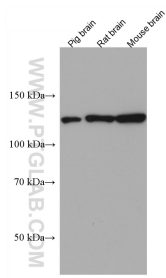
T: 4006900926

E: Proteintech-CN@ptglab.com

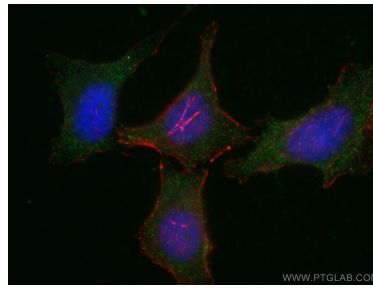
W: ptgcn.com

This product is exclusively available under Proteintech Group brand and is not available to purchase from any other manufacturer.

Selected Validation Data



Various lysates were subjected to SDS PAGE followed by western blot with 67471-1-Ig (PLCL2 antibody) at dilution of 1:3000 incubated at room temperature for 1.5 hours. This data was developed using the same antibody clone with 67471-1-PBS in a different storage buffer formulation.



Immunofluorescent analysis of (-20°C Ethanol) fixed HeLa cells using 67471-1-Ig (PLCL2 antibody), at dilution of 1:200 and Coralite® 488-Conjugated AffiniPure Goat Anti-Mouse IgG(H+L). This data was developed using the same antibody clone with 67471-1-PBS in a different storage buffer formulation.