

For Research Use Only

# MIS12 Monoclonal antibody, PBS Only



Catalog Number: 67475-1-PBS

## Basic Information

Catalog Number:

67475-1-PBS

Size:

1 mg/ml

Source:

Mouse

Isotype:

IgG2a

Immunogen Catalog Number:

AG16826

GenBank Accession Number:

BC000229

GeneID (NCBI):

79003

UNIPROT ID:

Q9H081

Full Name:

MIS12, MIND kinetochore complex component, homolog (yeast)

Calculated MW:

205 aa, 24 kDa

Observed MW:

25 kDa

Purification Method:

Protein A purification

CloneNo.:

2G5F6

## Applications

Tested Applications:

WB, Indirect ELISA

Species Specificity:

Human

## Background Information

### Storage

Storage:

Store at -80°C.

**The product is shipped with ice packs. Upon receipt, store it immediately at -80°C**

Storage Buffer:

PBS Only

For technical support and original validation data for this product please contact:

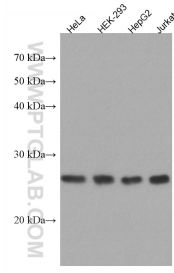
T: 4006900926

E: [Proteintech-CN@ptglab.com](mailto:Proteintech-CN@ptglab.com)

W: [ptgcn.com](http://ptgcn.com)

**This product is exclusively available under Proteintech Group brand and is not available to purchase from any other manufacturer.**

## Selected Validation Data



Various lysates were subjected to SDS PAGE followed by western blot with 67475-1-Ig (MIS12 antibody) at dilution of 1:3000 incubated at room temperature for 1.5 hours. This data was developed using the same antibody clone with 67475-1-PBS in a different storage buffer formulation.