

For Research Use Only

# EEF1A1 Monoclonal antibody, PBS Only



Catalog Number: 67495-1-PBS

## Basic Information

<b>Catalog Number:</b> 67495-1-PBS	<b>GenBank Accession Number:</b> BC014224	<b>Purification Method:</b> Protein A purification
<b>Size:</b> 1 mg/ml	<b>GeneID (NCBI):</b> 1915	<b>CloneNo.:</b> 1A9F5
<b>Source:</b> Mouse	<b>UNIPROT ID:</b> P68104	
<b>Isotype:</b> IgG1	<b>Full Name:</b> eukaryotic translation elongation factor 1 alpha 1	
<b>Immunogen Catalog Number:</b> AG1938	<b>Calculated MW:</b> 462 aa, 50 kDa	
	<b>Observed MW:</b> 49 kDa	

## Applications

**Tested Applications:**  
WB, Indirect ELISA, IHC, IF, FC

**Species Specificity:**  
Human, mouse, rat

## Background Information

EEF1A1, also named as EEF1A, EF1A and LENG7, belongs to the GTP-binding elongation factor family. This protein promotes the GTP-dependent binding of aminoacyl-tRNA to the A-site of ribosomes during protein biosynthesis. It is a typical housekeeping gene product required for the maintenance of cell proliferation and/or survival. In addition, EEF1A1 protects the aminoester bond against hydrolysis until a correct match between the codon on mRNA and the anti-codon on tRNA can be achieved.

## Storage

**Storage:**  
Store at -80°C.

**Storage Buffer:**  
PBS Only

For technical support and original validation data for this product please contact:

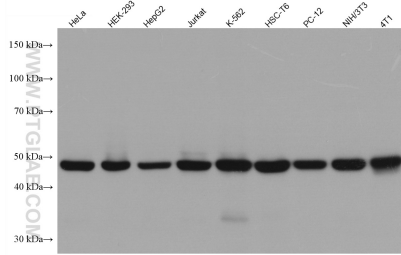
T: 4006900926

E: [Proteintech-CN@ptglab.com](mailto:Proteintech-CN@ptglab.com)

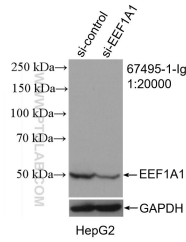
W: [ptgcn.com](http://ptgcn.com)

**This product is exclusively available under Proteintech Group brand and is not available to purchase from any other manufacturer.**

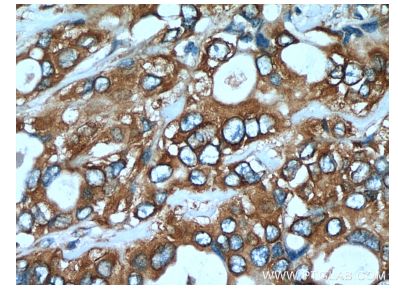
## Selected Validation Data



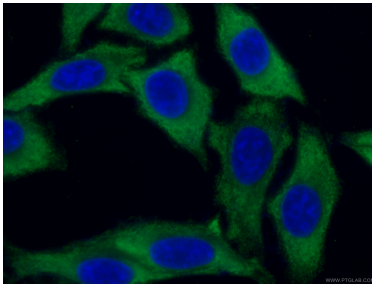
Various lysates were subjected to SDS PAGE followed by western blot with 67495-1-Ig (EEF 1A1 antibody) at dilution of 1:10000 incubated at room temperature for 1.5 hours. This data was developed using the same antibody clone with 67495-1-PBS in a different storage buffer formulation.



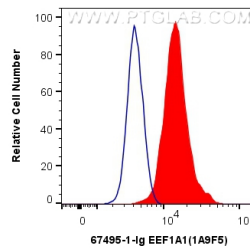
WB result of EEF1A1 antibody (67495-1-Ig; 1:20000; incubated at room temperature for 1.5 hours) with sh-Control and sh-EEF1A1 transfected HepG2 cells. This data was developed using the same antibody clone with 67495-1-PBS in a different storage buffer formulation.



Immunohistochemical analysis of paraffin-embedded human pancreas cancer tissue slide using 67495-1-Ig (EEF 1A1 antibody) at dilution of 1:300 (under 40x lens). Heat mediated antigen retrieval with Tris-EDTA buffer (pH 9.0). This data was developed using the same antibody clone with 67495-1-PBS in a different storage buffer formulation.



Immunofluorescent analysis of (-20°C Ethanol) fixed HepG2 cells using 67495-1-Ig (EEF 1A1 antibody), at dilution of 1:200 and Coralite@488-Conjugated AffiniPure Goat Anti-Mouse IgG(H+L). This data was developed using the same antibody clone with 67495-1-PBS in a different storage buffer formulation.



1X10<sup>6</sup> HepG2 cells were intracellularly stained with 0.4 ug Anti-Human EEF1A1 (67495-1-Ig, Clone:1A9F5) and Coralite@488-Conjugated AffiniPure Goat Anti-Mouse IgG(H+L) at dilution 1:1000 (red), or 0.4 ug Mouse IgG1 Isotype Control (MOPC-21) (65124-1-Ig, Clone: MOPC-21) (blue). Cells were fixed with 4% PFA and permeabilized with Flow Cytometry Perm Buffer (PF00011-C). This data was developed using the same antibody clone with 67495-1-PBS in a

