

For Research Use Only

TMF1 Monoclonal antibody, PBS Only

Catalog Number: 67505-1-PBS

Featured Product



Basic Information

| | | |
|---|---|---|
| Catalog Number: 67505-1-PBS | GenBank Accession Number: BC126123 | Purification Method: Protein A purification |
| Size: 1mg/ml | GeneID (NCBI): 7110 | CloneNo.: 3G12F2 |
| Source: Mouse | UNIPROT ID: P82094 | |
| Isotype: IgG1 | Full Name: TATA element modulatory factor 1 | |
| Immunogen Catalog Number: AG17666 | Calculated MW: 1093 aa, 123 kDa | |
| | Observed MW: 150-160 kDa | |

Applications

Tested Applications:
WB, IHC, IF/ICC, Indirect ELISA

Species Specificity:
human, mouse, rat

Background Information

TMF1, also named as ARA160, is a potential coactivator of the androgen receptor. TMF1 mediates STAT3 degradation. TMF1 plays critical roles in two RAB6-dependent retrograde transport processes: one from endosomes to the Golgi and the other from the Golgi to the ER. TMF1 binds the HIV-1 TATA element and inhibits transcriptional activation by the TATA-binding protein (TBP). The antibody is specific to TMF1. TMF1 can be detected as 150-160 kDa after posttranslational modification.

Storage

Storage:
Store at -80°C.
The product is shipped with ice packs. Upon receipt, store it immediately at -80°C

Storage Buffer:
PBS Only

For technical support and original validation data for this product please contact:

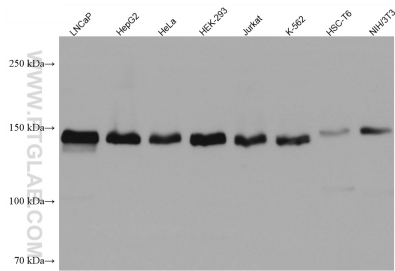
T: 4006900926

E: Proteintech-CN@ptglab.com

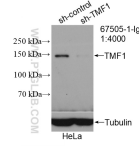
W: ptgcn.com

This product is exclusively available under Proteintech Group brand and is not available to purchase from any other manufacturer.

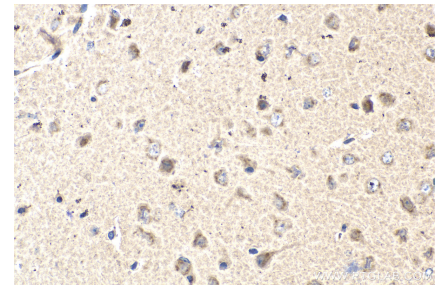
Selected Validation Data



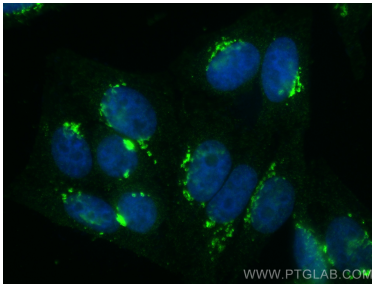
Various lysates were subjected to SDS PAGE followed by western blot with 67505-1-Ig (TMF1 antibody) at dilution of 1:10000 incubated at room temperature for 1.5 hours. This data was developed using the same antibody clone with 67505-1-PBS in a different storage buffer formulation.



WB result of TMF1 antibody (67505-1-Ig: 1:4000; incubated at room temperature for 1.5 hours) with sh-Control and sh-TMF1 transfected HeLa cells. This data was developed using the same antibody clone with 67505-1-PBS in a different storage buffer formulation.



Immunohistochemical analysis of paraffin-embedded mouse brain tissue slide using 67505-1-Ig (TMF1 antibody) at dilution of 1:500 (under 40x lens). Heat mediated antigen retrieval with Tris-EDTA buffer (pH 9.0). This data was developed using the same antibody clone with 67505-1-PBS in a different storage buffer formulation.



Immunofluorescent analysis of (4% PFA) fixed HepG2 cells using TMF1 antibody (67505-1-Ig, Clone: 3G12F2) at dilution of 1:800 and CoraLite®488-Conjugated AffiniPure Goat Anti-Mouse IgG(H+L). This data was developed using the same antibody clone with 67505-1-PBS in a different storage buffer formulation.