

For Research Use Only

TPI1 Monoclonal antibody

Catalog Number: 67515-1-Ig

Featured Product

2 Publications



Basic Information

Catalog Number:

67515-1-Ig

Size:

1600 μ g/ml

Source:

Mouse

Isotype:

IgG1

Immunogen Catalog Number:

AG16653

GenBank Accession Number:

BC007086

GeneID (NCBI):

7167

UNIPROT ID:

P60174

Full Name:

triosephosphate isomerase 1

Calculated MW:

27 kDa

Observed MW:

27 kDa

Purification Method:

Protein G purification

CloneNo.:

2E7E5

Recommended Dilutions:

WB 1:5000-1:50000

IHC 1:500-1:2000

IF 1:200-1:800

Applications

Tested Applications:

IF/ICC, IHC, WB, ELISA

Cited Applications:

WB

Species Specificity:

Human, Mouse, Rat

Cited Species:

mouse

Note-IHC: suggested antigen retrieval with TE buffer pH 9.0; (*) Alternatively, antigen retrieval may be performed with citrate buffer pH 6.0

Positive Controls:

WB : HeLa cells, HEK-293 cells, HepG2 cells, Jurkat cells, K-562 cells, HSC-T6 cells, NIH/3T3 cells

IHC : human colon cancer tissue,

IF : HeLa cells,

Background Information

TPI1 (Triosephosphate isomerase) is also named as TIM, TPI and belongs to the triosephosphate isomerase family. It is a key enzyme in cell metabolism that controls the glycolytic flow and energy production through the interconversion of dihydroxyacetone phosphate (DHAP) and D-glyceraldehyde 3-phosphate (G3P) (PMID:19251756). Defects in TPI1 are the cause of triosephosphate isomerase deficiency (TPI deficiency). It can exist as a homodimer (PMID:18562316).

Notable Publications

Author	Pubmed ID	Journal	Application
Zhiyong Zhang	36384075	Int Immunopharmacol	WB
Yuqiang Bai	37098310	Food Chem	WB

Storage

Storage:

Store at -20°C. Stable for one year after shipment.

Storage Buffer:

PBS with 0.02% sodium azide and 50% glycerol pH 7.3.

Aliquoting is unnecessary for -20°C storage

For technical support and original validation data for this product please contact:

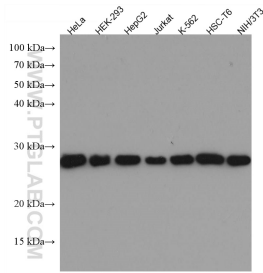
T: 4006900926

E: Proteintech-CN@ptglab.com

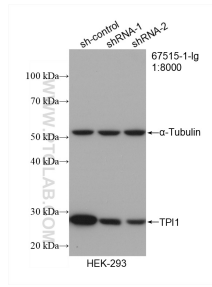
W: ptgcn.com

This product is exclusively available under Proteintech Group brand and is not available to purchase from any other manufacturer.

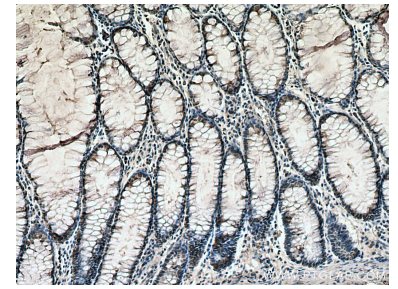
Selected Validation Data



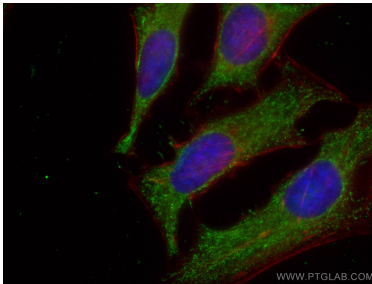
Various lysates were subjected to SDS PAGE followed by western blot with 67515-1-Ig (TPI1 antibody) at dilution of 1:10000 incubated at room temperature for 1.5 hours.



WB result of TPI1 antibody (67515-1-Ig; 1:8000; incubated at room temperature for 1.5 hours) with sh-Control and sh-TPI1 transfected HEK-293 cells.



Immunohistochemical analysis of paraffin-embedded human colon cancer tissue slide using 67515-1-Ig (TPI1 antibody) at dilution of 1:1000 (under 10x lens). Heat mediated antigen retrieval with Tris-EDTA buffer (pH 9.0).



Immunofluorescent analysis of (-20°C Ethanol) fixed HeLa cells using TPI1 antibody (67515-1-Ig; Clone: 2E7E5) at dilution of 1:400 and CoraLite®488-Conjugated AffiniPure Goat Anti-Mouse IgG(H+L), CL594-Phalloidin (red).