

For Research Use Only

# SLC2A9 Monoclonal antibody, PBS Only



Catalog Number: 67530-1-PBS

## Basic Information

Catalog Number:

67530-1-PBS

Size:

1 mg/ml

Source:

Mouse

Isotype:

IgG1

Immunogen Catalog Number:

AG24135

GenBank Accession Number:

BC018897

GeneID (NCBI):

56606

UNIPROT ID:

Q9NRM0

Full Name:

solute carrier family 2 (facilitated glucose transporter), member 9

Calculated MW:

540 aa, 59 kDa

Observed MW:

56-59 kDa

Purification Method:

Protein A purification

CloneNo.:

2D6E1

## Applications

Tested Applications:

WB, Indirect ELISA, IHC, IF

Species Specificity:

Human, Mouse, Rat, Rabbit, Pig

## Background Information

### Storage

Storage:

Store at -80°C.

**The product is shipped with ice packs. Upon receipt, store it immediately at -80°C**

Storage Buffer:

PBS Only

For technical support and original validation data for this product please contact:

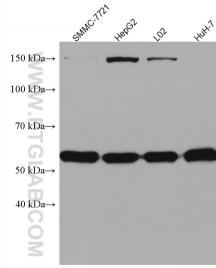
T: 4006900926

E: [Proteintech-CN@ptglab.com](mailto:Proteintech-CN@ptglab.com)

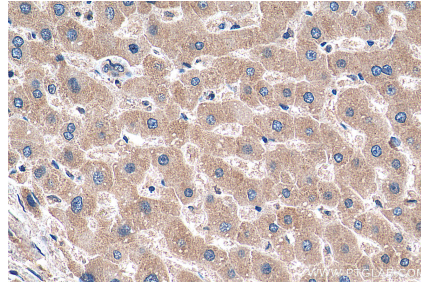
W: [ptgcn.com](http://ptgcn.com)

**This product is exclusively available under Proteintech Group brand and is not available to purchase from any other manufacturer.**

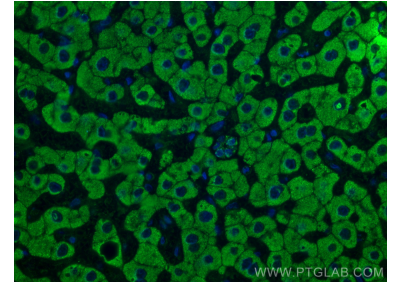
## Selected Validation Data



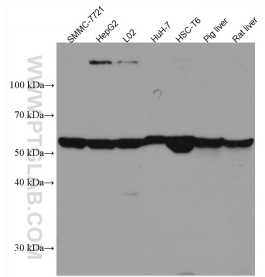
Various lysates were subjected to SDS PAGE followed by western blot with 67530-1-Ig (SLC2A9 antibody) at dilution of 1:10000 incubated at room temperature for 1.5 hours. This data was developed using the same antibody clone with 67530-1-PBS in a different storage buffer formulation.



Immunohistochemical analysis of paraffin-embedded human liver tissue slide using 67530-1-Ig (SLC2A9 antibody) at dilution of 1:1000 (under 40x lens). Heat mediated antigen retrieval with Tris-EDTA buffer (pH 9.0). This data was developed using the same antibody clone with 67530-1-PBS in a different storage buffer formulation.



Immunofluorescent analysis of (4% PFA) fixed human hepatocirrhosis tissue using SLC2A9 antibody (67530-1-Ig, Clone: 2D6E1) at dilution of 1:400 and CoraLite®488-Conjugated AffiniPure Goat Anti-Mouse IgG(H+L). This data was developed using the same antibody clone with 67530-1-PBS in a different storage buffer formulation.



Various lysates were subjected to SDS PAGE followed by western blot with 67530-1-Ig (SLC2A9 antibody) at dilution of 1:10000 incubated at room temperature for 1.5 hours. This data was developed using the same antibody clone with 67530-1-PBS in a different storage buffer formulation.