

For Research Use Only

GPT/ALT1 Monoclonal antibody, PBS Only



Catalog Number: 67531-1-PBS

Basic Information

Catalog Number: 67531-1-PBS	GenBank Accession Number: BC018207	Purification Method: Protein A purification
Size: 1 mg/ml	GeneID (NCBI): 2875	CloneNo.: 5F6B5
Source: Mouse	UNIPROT ID: P24298	
Isotype: IgG1	Full Name: glutamic-pyruvate transaminase (alanine aminotransferase)	
Immunogen Catalog Number: AG10453	Calculated MW: 496 aa, 55 kDa	
	Observed MW: 52 kDa	

Applications

Tested Applications:
WB, Indirect ELISA, IF

Species Specificity:
Human, Pig, rat, mouse

Background Information

GPT, also known as ALT1 (glutamate-pyruvate transaminase 1), catalyzes the reversible transamination between alanine and 2-oxoglutarate to generate pyruvate and glutamate and, therefore, plays a key role in the intermediary metabolism of glucose and amino acids. Serum activity levels of this enzyme are routinely used as a biomarker of liver injury caused by drug toxicity, infection, alcohol, and steatosis. A related gene on chromosome 16 encodes a putative mitochondrial alanine aminotransferase.

Storage

Storage:
Store at -80°C.

Storage Buffer:
PBS Only

For technical support and original validation data for this product please contact:

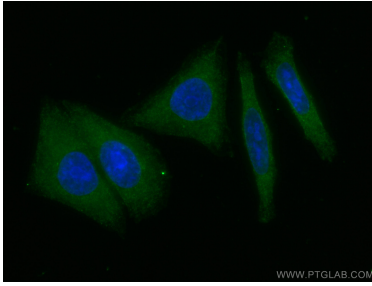
T: 4006900926

E: Proteintech-CN@ptglab.com

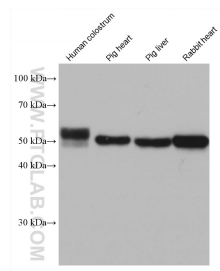
W: ptgcn.com

This product is exclusively available under Proteintech Group brand and is not available to purchase from any other manufacturer.

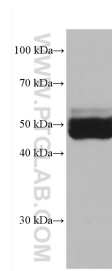
Selected Validation Data



Immunofluorescent analysis of (-20°C Ethanol) fixed HepG2 cells using GPT antibody (67531-1-Ig, Clone: 5F6B5) at dilution of 1:400 and CoraLite®488-Conjugated AffiniPure Goat Anti-Mouse IgG(H+L). This data was developed using the same antibody clone with 67531-1-PBS in a different storage buffer formulation.



Various lysates were subjected to SDS PAGE followed by western blot with 67531-1-Ig (GPT/ALT1 antibody) at dilution of 1:10000 incubated at room temperature for 1.5 hours. This data was developed using the same antibody clone with 67531-1-PBS in a different storage buffer formulation.



mouse liver tissue were subjected to SDS PAGE followed by western blot with 67531-1-Ig (GPT/ALT1 antibody) at dilution of 1:10000 incubated at room temperature for 1.5 hours. This data was developed using the same antibody clone with 67531-1-PBS in a different storage buffer formulation.