

For Research Use Only

# HINT1 Monoclonal antibody, PBS Only



Catalog Number: 67583-1-PBS

## Basic Information

<b>Catalog Number:</b> 67583-1-PBS	<b>GenBank Accession Number:</b> BC007090	<b>Purification Method:</b> Protein A purification
<b>Size:</b> 1 mg/ml	<b>GeneID (NCBI):</b> 3094	<b>CloneNo.:</b> 1G3E4
<b>Source:</b> Mouse	<b>UNIPROT ID:</b> P49773	
<b>Isotype:</b> IgG2a	<b>Full Name:</b> histidine triad nucleotide binding protein 1	
<b>Immunogen Catalog Number:</b> AG16662	<b>Calculated MW:</b> 14 kDa	
	<b>Observed MW:</b> 14 kDa	

## Applications

**Tested Applications:**  
WB, Indirect ELISA, IHC, IF

**Species Specificity:**  
Human

## Background Information

HINT1 (Histidine triad nucleotide-binding protein 1) is also named as HINT, PKC11, PRKCNH1, which is a member of the histidine triad (HIT) family, highly conserved in diverse species and ubiquitously expressed in mammalian tissues. It hydrolyzes adenosine 5'-monophosphoramidate substrates such as AMP-morpholidate, AMP-N-alanine methyl ester, AMP-alpha-acetyl lysine methyl ester and AMP-NH<sub>2</sub>.

## Storage

**Storage:**  
Store at -80°C.

**Storage Buffer:**  
PBS Only

For technical support and original validation data for this product please contact:

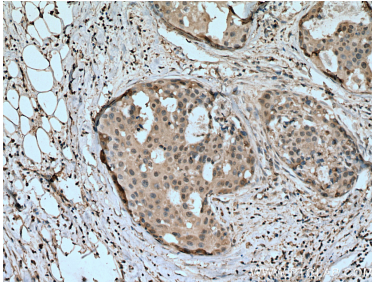
T: 4006900926

E: [Proteintech-CN@ptglab.com](mailto:Proteintech-CN@ptglab.com)

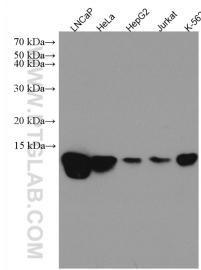
W: [ptgcn.com](http://ptgcn.com)

**This product is exclusively available under Proteintech Group brand and is not available to purchase from any other manufacturer.**

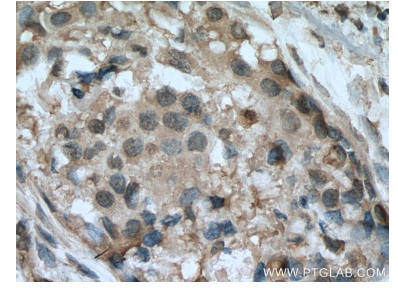
## Selected Validation Data



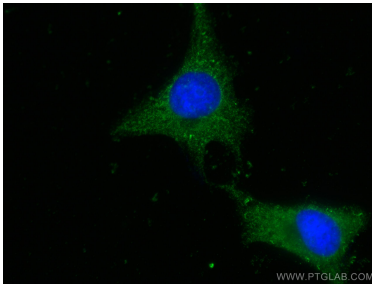
Immunohistochemical analysis of paraffin-embedded human breast cancer tissue slide using 67583-1-Ig (HINT1 antibody) at dilution of 1:200 (under 10x lens). Heat mediated antigen retrieval with Tris-EDTA buffer (pH 9.0). This data was developed using the same antibody clone with 67583-1-PBS in a different storage buffer formulation.



Various lysates were subjected to SDS PAGE followed by western blot with 67583-1-Ig (HINT1 antibody) at dilution of 1:2000 incubated at room temperature for 1.5 hours. This data was developed using the same antibody clone with 67583-1-PBS in a different storage buffer formulation.



Immunohistochemical analysis of paraffin-embedded human breast cancer tissue slide using 67583-1-Ig (HINT1 antibody) at dilution of 1:200 (under 40x lens). Heat mediated antigen retrieval with Tris-EDTA buffer (pH 9.0). This data was developed using the same antibody clone with 67583-1-PBS in a different storage buffer formulation.



Immunofluorescent analysis of (-20°C Ethanol) fixed HeLa cells using HINT1 antibody (67583-1-Ig, Clone: 1G3E4) at dilution of 1:400 and CoraLite®488-Conjugated AffiniPure Goat Anti-Mouse IgG(H+L). This data was developed using the same antibody clone with 67583-1-PBS in a different storage buffer formulation.