

For Research Use Only

# ATM Monoclonal antibody, PBS Only

Catalog Number: 67586-1-PBS



## Basic Information

<b>Catalog Number:</b> 67586-1-PBS	<b>GenBank Accession Number:</b> BC137169	<b>Purification Method:</b> Protein A purification
<b>Size:</b> 1 mg/ml	<b>GeneID (NCBI):</b> 472	<b>CloneNo.:</b> 3E6F4
<b>Source:</b> Mouse	<b>UNIPROT ID:</b> Q13315	
<b>Isotype:</b> IgG1	<b>Full Name:</b> ataxia telangiectasia mutated	
<b>Immunogen Catalog Number:</b> AG30001	<b>Observed MW:</b> 310-350 kDa	

## Applications

**Tested Applications:**  
WB, Indirect ELISA, IF

**Species Specificity:**  
Human, Rat

## Background Information

The ATM protein is a member of the phosphatidylinositol 3-kinase family of proteins that respond to DNA damage by phosphorylating key substrates involved in DNA repair and/or cell cycle control. It is involved in mitogenic signal transduction, meiotic recombination, detection of DNA damage, and cell cycle control.

## Storage

**Storage:**  
Store at -80°C.

**Storage Buffer:**  
PBS Only

For technical support and original validation data for this product please contact:

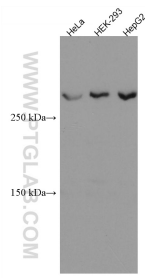
T: 4006900926

E: [Proteintech-CN@ptglab.com](mailto:Proteintech-CN@ptglab.com)

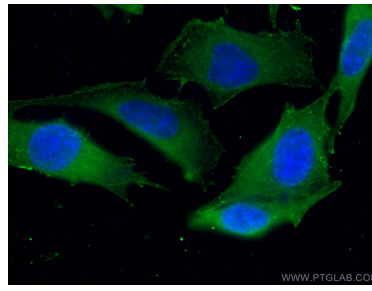
W: [ptgcn.com](http://ptgcn.com)

**This product is exclusively available under Proteintech Group brand and is not available to purchase from any other manufacturer.**

## Selected Validation Data



Various lysates were subjected to SDS PAGE followed by western blot with 67586-1-Ig (ATM antibody) at dilution of 1:3000 incubated at room temperature for 1.5 hours. This data was developed using the same antibody clone with 67586-1-PBS in a different storage buffer formulation.



Immunofluorescent analysis of (4% PFA) fixed HeLa cells using 67586-1-Ig (ATM antibody), at dilution of 1:200 and CoraLite®488-Conjugated AffiniPure Goat Anti-Mouse IgG(H+L). This data was developed using the same antibody clone with 67586-1-PBS in a different storage buffer formulation.