

For Research Use Only

# TERF1 Monoclonal antibody

Catalog Number: 67592-1-Ig **1 Publications**



## Basic Information

Catalog Number:

67592-1-Ig

Size:

1700 µg/ml

Source:

Mouse

Isotype:

IgG1

Immunogen Catalog Number:

AG12540

GenBank Accession Number:

BC029378

GeneID (NCBI):

7013

UNIPROT ID:

P54274

Full Name:

telomeric repeat binding factor  
(NIMA-interacting) 1

Calculated MW:

439 aa, 50 kDa

Observed MW:

48-50 kDa

Purification Method:

Protein A purification

CloneNo.:

1D10G4

Recommended Dilutions:

WB 1:1000-1:6000

## Applications

Tested Applications:

WB, ELISA

Cited Applications:

WB, IP, ChIP

Species Specificity:

human

Cited Species:

human

Positive Controls:

WB : K-562 cells, HEK-293 cells, Jurkat cells

## Background Information

Telomeres are nucleoprotein complexes located at chromosome ends that consist of tandem arrays of TTAGGG repeats bound to specific proteins. Telomeres protect chromosome ends from degradation and end-to-end fusions, prevent activation of DNA damage checkpoints, and modulate the maintenance of telomeric DNA by telomerase. TERF1 (telomeric repeat-binding factor 1) binds the telomeric double-stranded TTAGGG repeat and negatively regulates telomere length. It's one component of the shelterin complex, which involved in the regulation of telomere length and protection.

## Notable Publications

Author	Pubmed ID	Journal	Application
Athanasios Siametis	38744897	Nat Commun	WB,IP,ChIP

## Storage

Storage:

Store at -20°C. Stable for one year after shipment.

Storage Buffer:

PBS with 0.1% sodium azide and 50% glycerol pH 7.3.

Aliquoting is unnecessary for -20°C storage

For technical support and original validation data for this product please contact:

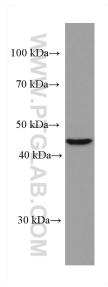
T: 4006900926

E: [Proteintech-CN@ptglab.com](mailto:Proteintech-CN@ptglab.com)

W: [ptgcn.com](http://ptgcn.com)

**This product is exclusively available under Proteintech Group brand and is not available to purchase from any other manufacturer.**

## Selected Validation Data



K-562 cells were subjected to SDS PAGE followed by western blot with 67592-1-Ig (TERF1 antibody) at dilution of 1:3000 incubated at room temperature for 1.5 hours.