

For Research Use Only

SLC25A37 Monoclonal antibody, PBS Only (Capture)

Catalog Number: 67593-4-PBS



Basic Information

Catalog Number:

67593-4-PBS

Size:

1 mg/ml

Source:

Mouse

Isotype:

IgG1

Immunogen Catalog Number:

AG26216

GenBank Accession Number:

BC132799

GeneID (NCBI):

51312

UNIPROT ID:

Q9NYZ2

Full Name:

solute carrier family 25, member 37

Purification Method:

Protein G Magarose purification

CloneNo.:

2A4G12

Applications

Tested Applications:

Cytometric bead array, Indirect ELISA

Species Specificity:

human

Background Information

Storage

Storage:

Store at -80°C.

The product is shipped with ice packs. Upon receipt, store it immediately at -80°C

Storage Buffer:

PBS Only

For technical support and original validation data for this product please contact:

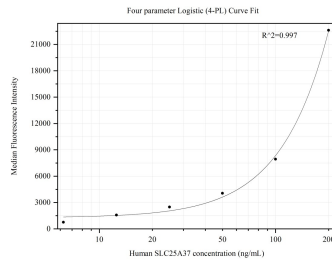
T: 4006900926

E: Proteintech-CN@ptglab.com

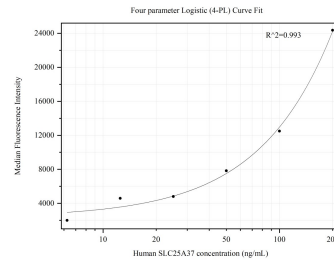
W: ptgcn.com

This product is exclusively available under Proteintech Group brand and is not available to purchase from any other manufacturer.

Selected Validation Data



Cytometric bead array standard curve of MP50411-2, SLC25A37 Monoclonal Matched Antibody Pair, PBS Only. Capture antibody: 67593-4-PBS. Detection antibody: 67593-3-PBS. Standard: Ag26216. Range: 6.25-200 ng/mL



Cytometric bead array standard curve of MP50411-4, SLC25A37 Monoclonal Matched Antibody Pair, PBS Only. Capture antibody: 67593-4-PBS. Detection antibody: 67593-6-PBS. Standard: Ag26216. Range: 6.25-200 ng/mL