

For Research Use Only

GSS Monoclonal antibody

Catalog Number: 67598-1-Ig

Featured Product

2 Publications



Basic Information

Catalog Number:

67598-1-Ig

Size:

2400 µg/ml

Source:

Mouse

Isotype:

IgG1

Immunogen Catalog Number:

AG8354

GenBank Accession Number:

BC007927

GeneID (NCBI):

2937

UNIPROT ID:

P48637

Full Name:

glutathione synthetase

Calculated MW:

474 aa, 52 kDa

Observed MW:

52 kDa

Purification Method:

Protein A purification

CloneNo.:

1F12G1

Recommended Dilutions:

WB 1:5000-1:50000

IHC 1:500-1:2000

IF 1:200-1:800

Applications

Tested Applications:

IF/ICC, IHC, WB, ELISA

Cited Applications:

WB

Species Specificity:

Human, Mouse, Rat, pig, hamster

Cited Species:

human

Note-IHC: suggested antigen retrieval with TE buffer pH 9.0; (*) Alternatively, antigen retrieval may be performed with citrate buffer pH 6.0

Positive Controls:

WB : CHO cells, rat liver tissue, HEK-293 cells, HeLa cells, HepG2 cells, Jurkat cells

IHC : human liver cancer tissue,

IF : HeLa cells,

Background Information

Notable Publications

Author	Pubmed ID	Journal	Application
Xiaohan Jin	36243112	J Biol Chem	WB
Chu-Xuan Liu	38414591	World J Gastroenterol	WB

Storage

Storage:

Store at -20°C. Stable for one year after shipment.

Storage Buffer:

PBS with 0.02% sodium azide and 50% glycerol pH 7.3.

Aliquoting is unnecessary for -20°C storage

For technical support and original validation data for this product please contact:

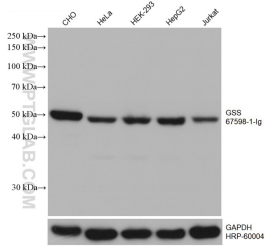
T: 4006900926

E: Proteintech-CN@ptglab.com

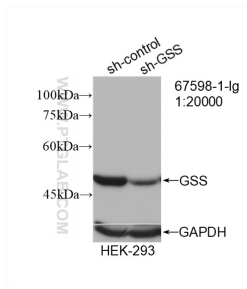
W: ptgcn.com

This product is exclusively available under Proteintech Group brand and is not available to purchase from any other manufacturer.

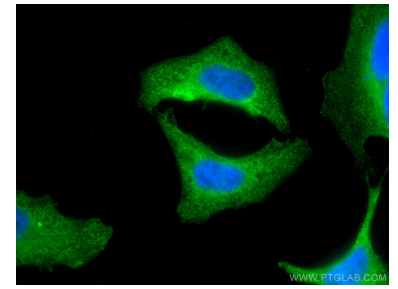
Selected Validation Data



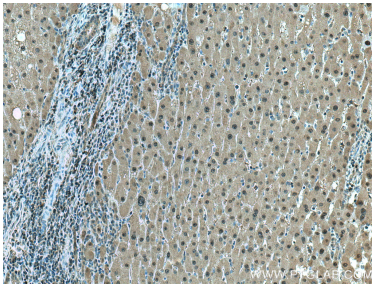
Various lysates were subjected to SDS PAGE followed by western blot with 67598-1-Ig (GSS antibody) at dilution of 1:20000 incubated at room temperature for 1.5 hours. The membrane was stripped and reblotted with HRP-conjugated GAPDH Monoclonal antibody (HRP-60004) as loading control.



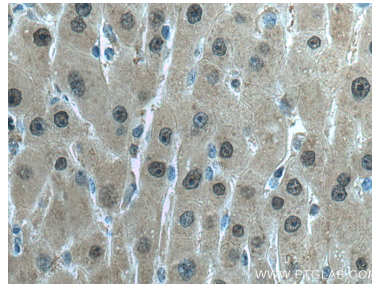
WB result of GSS antibody (67598-1-Ig; 1:20000; incubated at room temperature for 1.5 hours) with sh-Control and sh-GSS transfected HEK-293 cells.



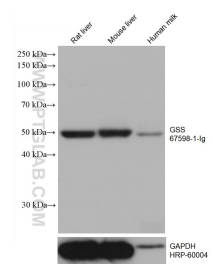
Immunofluorescent analysis of (4% PFA) fixed HeLa cells using GSS antibody (67598-1-Ig, Clone: 1F12G1) at dilution of 1:400 and CoraLite@488-Conjugated AffiniPure Goat Anti-Mouse IgG(H+L).



Immunohistochemical analysis of paraffin-embedded human liver cancer tissue slide using 67598-1-Ig (GSS antibody) at dilution of 1:1000 (under 10x lens). Heat mediated antigen retrieval with Tris-EDTA buffer (pH 9.0).



Immunohistochemical analysis of paraffin-embedded human liver cancer tissue slide using 67598-1-Ig (GSS antibody) at dilution of 1:1000 (under 40x lens). Heat mediated antigen retrieval with Tris-EDTA buffer (pH 9.0).



Various lysates were subjected to SDS PAGE followed by western blot with 67598-1-Ig (GSS antibody) at dilution of 1:20000 incubated at room temperature for 1.5 hours. The membrane was stripped and reblotted with HRP-conjugated GAPDH Monoclonal antibody (HRP-60004) as loading control.