

For Research Use Only

SERPIND1 Monoclonal antibody, PBS Only



Catalog Number: 67602-1-PBS

Basic Information

Catalog Number: 67602-1-PBS	GenBank Accession Number: BC035028	Purification Method: Protein A purification
Size: 1 mg/ml	GeneID (NCBI): 3053	CloneNo.: 2C1E1
Source: Mouse	UNIPROT ID: P05546	
Isotype: IgG1	Full Name: serpin peptidase inhibitor, clade D (heparin cofactor), member 1	
Immunogen Catalog Number: AG26351	Calculated MW: 499 aa, 57 kDa	
	Observed MW: 66-70 kDa	

Applications

Tested Applications:
WB, Indirect ELISA, IHC, IF

Species Specificity:
Human, pig

Background Information

Storage

Storage:
Store at -80°C.
The product is shipped with ice packs. Upon receipt, store it immediately at -80°C

Storage Buffer:
PBS Only

For technical support and original validation data for this product please contact:

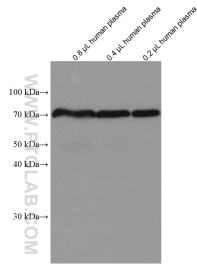
T: 4006900926

E: Proteintech-CN@ptglab.com

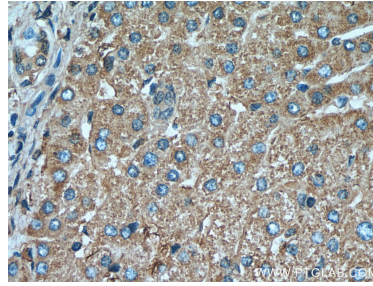
W: ptgcn.com

This product is exclusively available under Proteintech Group brand and is not available to purchase from any other manufacturer.

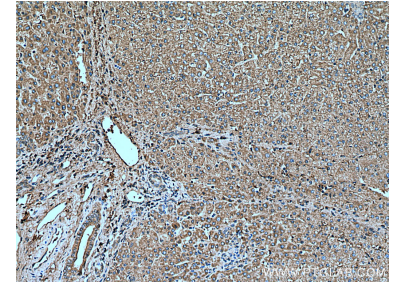
Selected Validation Data



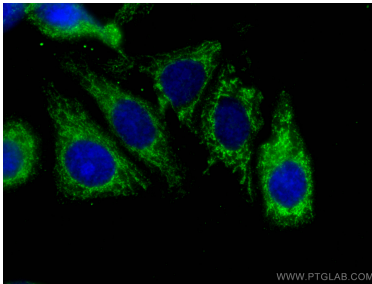
0.8 μ L, 0.4 μ L, and 0.2 μ L human plasma lysates were subjected to SDS PAGE followed by western blot with 67602-1-Ig (SERPIND1 antibody) at dilution of 1:20000 incubated at room temperature for 1.5 hours. This data was developed using the same antibody clone with 67602-1-PBS in a different storage buffer formulation.



Immunohistochemical analysis of paraffin-embedded human liver tissue slide using 67602-1-Ig (SERPIND1 antibody) at dilution of 1:800 (under 40x lens). Heat mediated antigen retrieval with Tris-EDTA buffer (pH 9.0). This data was developed using the same antibody clone with 67602-1-PBS in a different storage buffer formulation.



Immunohistochemical analysis of paraffin-embedded human liver tissue slide using 67602-1-Ig (SERPIND1 antibody) at dilution of 1:800 (under 10x lens). Heat mediated antigen retrieval with Tris-EDTA buffer (pH 9.0). This data was developed using the same antibody clone with 67602-1-PBS in a different storage buffer formulation.



Immunofluorescent analysis of (-20°C Ethanol) fixed HepG2 cells using SERPIND1 antibody (67602-1-Ig, Clone: 2C1E1) at dilution of 1:400 and CoraLite®488-Conjugated AffiniPure Goat Anti-Mouse IgG(H+L). This data was developed using the same antibody clone with 67602-1-PBS in a different storage buffer formulation.