

For Research Use Only

# PNLIPRP1 Monoclonal antibody, PBS Only



Catalog Number: 67603-1-PBS

## Basic Information

|   |  |   |
|---|--|---|
| <b>Catalog Number:</b><br>67603-1-PBS       | <b>GenBank Accession Number:</b><br>BC025784             | <b>Purification Method:</b><br>Protein A purification |
| <b>Size:</b><br>1 mg/ml                     | <b>GeneID (NCBI):</b><br>5407                            | <b>CloneNo.:</b><br>1F11E6                            |
| <b>Source:</b><br>Mouse                     | <b>UNIPROT ID:</b><br>P54315                             |   |
| <b>Isotype:</b><br>IgG2b                    | <b>Full Name:</b><br>pancreatic lipase-related protein 1 |   |
| <b>Immunogen Catalog Number:</b><br>AG26350 | <b>Calculated MW:</b><br>467 aa, 52 kDa                  |   |
|   | <b>Observed MW:</b><br>51 kDa                            |   |

## Applications

**Tested Applications:**  
WB, Indirect ELISA, IHC

**Species Specificity:**  
Human, mouse, rat, pig

## Background Information

### Storage

**Storage:**  
Store at -80°C.  
**The product is shipped with ice packs. Upon receipt, store it immediately at -80°C**

**Storage Buffer:**  
PBS Only

For technical support and original validation data for this product please contact:

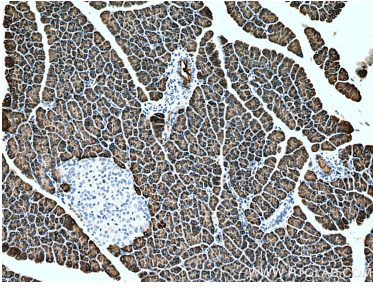
T: 4006900926

E: [Proteintech-CN@ptglab.com](mailto:Proteintech-CN@ptglab.com)

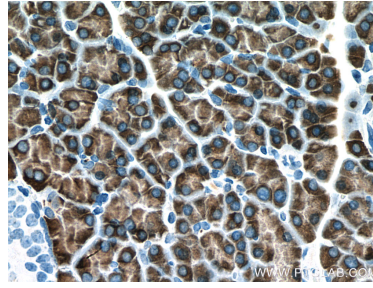
W: [ptgcn.com](http://ptgcn.com)

**This product is exclusively available under Proteintech Group brand and is not available to purchase from any other manufacturer.**

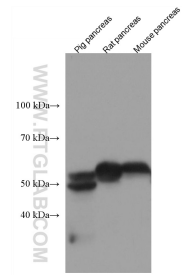
## Selected Validation Data



Immunohistochemical analysis of paraffin-embedded rat pancreas tissue slide using 67603-1-Ig (PNLI PRP1 antibody) at dilution of 1:1000 (under 10x lens). Heat mediated antigen retrieval with Tris-EDTA buffer (pH 9.0). This data was developed using the same antibody clone with 67603-1-PBS in a different storage buffer formulation.



Immunohistochemical analysis of paraffin-embedded rat pancreas tissue slide using 67603-1-Ig (PNLI PRP1 antibody) at dilution of 1:1000 (under 40x lens). Heat mediated antigen retrieval with Tris-EDTA buffer (pH 9.0). This data was developed using the same antibody clone with 67603-1-PBS in a different storage buffer formulation.



pig pancreas tissue were subjected to SDS PAGE followed by western blot with 67603-1-Ig (PNLI PRP1 antibody) at dilution of 1:10000 incubated at room temperature for 1.5 hours. This data was developed using the same antibody clone with 67603-1-PBS in a different storage buffer formulation.