

For Research Use Only

# Bovine Bovine IgG Monoclonal antibody, PBS Only



Catalog Number: 67615-1-PBS

## Basic Information

Catalog Number:

67615-1-PBS

Size:

1 mg/ml

Source:

Mouse

Isotype:

IgG2a

GenBank Accession Number:

GeneID (NCBI):

Full Name:

Observed MW:

55 kDa

Purification Method:

Protein A purification

CloneNo.:

1C5C5

## Applications

Tested Applications:

WB, Indirect ELISA

Species Specificity:

bovine

## Background Information

Bovine IgG is named as BGG, bovine IgG heavy chain. This antibody can recognize heavy chain of bovine IgG.

## Storage

Storage:

Store at -80°C.

**The product is shipped with ice packs. Upon receipt, store it immediately at -80°C**

Storage Buffer:

PBS Only

For technical support and original validation data for this product please contact:

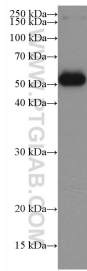
T: 4006900926

E: [Proteintech-CN@ptglab.com](mailto:Proteintech-CN@ptglab.com)

W: [ptgcn.com](http://ptgcn.com)

**This product is exclusively available under Proteintech Group brand and is not available to purchase from any other manufacturer.**

## Selected Validation Data



62.5 nL fetal bovine serum was subjected to SDS-PAGE followed by western blot with 67615-1-Ig (Bovine IgG antibody) at dilution of 1:10000 incubated at room temperature for 1.5 hours. This data was developed using the same antibody clone with 67615-1-PBS in a different storage buffer formulation.