

For Research Use Only

# CREB3L1,OASIS Monoclonal antibody, PBS Only



Catalog Number:67617-1-PBS

## Basic Information

<b>Catalog Number:</b> 67617-1-PBS	<b>GenBank Accession Number:</b> BC015781	<b>Purification Method:</b> Protein G purification
<b>Size:</b> 1 mg/ml	<b>GeneID (NCBI):</b> 90993	<b>CloneNo.:</b> 2B5B4
<b>Source:</b> Mouse	<b>UNIPROT ID:</b> Q96BA8	
<b>Isotype:</b> IgG1	<b>Full Name:</b> cAMP responsive element binding protein 3-like 1	
<b>Immunogen Catalog Number:</b> AG28042	<b>Calculated MW:</b> 57 kDa	
	<b>Observed MW:</b> 58 kDa	

## Applications

**Tested Applications:**  
WB,Indirect ELISA,FC

**Species Specificity:**  
Human, mouse, rat

## Background Information

Cyclic AMP-responsive element-binding protein 3-like protein 1(CREB3L1) belongs to a family of transcription factors that are synthesized as membrane-bound precursors in the endoplasmic reticulum (ER) and then transported to the Golgi where they are activated through regulated intramembrane proteolysis (RIP). Also it participates in ER-stress response in astrocytes in the central nervous system. It may has a role in gliosis, and involves in activation of transcription through box-B element but not CRE. CREB3L1 acts as a transcription repressor in proliferation of virus-infected cell. The full-length precursor form (approximately 84 kDa) of CREB3L1 and the matured form of CREB3L1 is 58 kDa. (PMID: 20668028)

## Storage

**Storage:**  
Store at -80°C.

**Storage Buffer:**  
PBS Only

For technical support and original validation data for this product please contact:

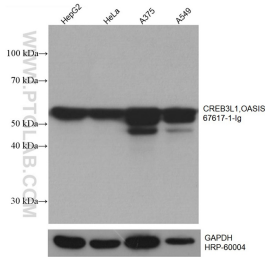
T: 4006900926

E: [Proteintech-CN@ptglab.com](mailto:Proteintech-CN@ptglab.com)

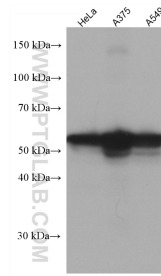
W: [ptgcn.com](http://ptgcn.com)

**This product is exclusively available under Proteintech Group brand and is not available to purchase from any other manufacturer.**

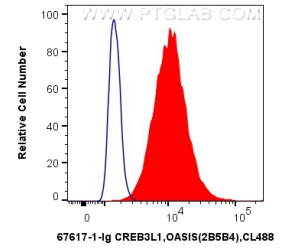
## Selected Validation Data



Various lysates were subjected to SDS PAGE followed by western blot with 67617-1-Ig (CREB3L1, OASIS antibody) at dilution of 1:50000 incubated at room temperature for 1.5 hours. The membrane was stripped and reblotted with HRP-conjugated GAPDH Monoclonal antibody (HRP-60004) as loading control. This data was developed using the same antibody clone with 67617-1-PBS in a different storage buffer formulation.



Various lysates were subjected to SDS PAGE followed by western blot with 67617-1-Ig (CREB3L1, OASIS antibody) at dilution of 1:5000 incubated at room temperature for 1.5 hours. This data was developed using the same antibody clone with 67617-1-PBS in a different storage buffer formulation.



1X10<sup>6</sup> HepG2 cells were intracellularly stained with 0.5 ug Anti-Human CREB3L1, OASIS (67617-1-Ig, Clone:2B5B4) and CoraLite®488-Conjugated AffiniPure Goat Anti-Mouse IgG(H+L) at dilution 1:1000 (red), or 0.5 ug Control Antibody. Cells were fixed with 4% PFA and permeabilized with Flow Cytometry Perm Buffer (PF00011-C). This data was developed using the same antibody clone with 67617-1-PBS in a different storage buffer formulation.