

For Research Use Only

ICAM2 Monoclonal antibody, PBS Only



Catalog Number: 67628-1-PBS

Basic Information

Catalog Number: 67628-1-PBS	GenBank Accession Number: BC003097	Purification Method: Protein A purification
Size: 1 mg/ml	GeneID (NCBI): 3384	CloneNo.: 1H3C6
Source: Mouse	UNIPROT ID: P13598	
Isotype: IgG2a	Full Name: intercellular adhesion molecule 2	
Immunogen Catalog Number: AG29441	Calculated MW: 31 kDa	
	Observed MW: 55-60 kDa	

Applications

Tested Applications:
WB, Indirect ELISA, FC

Species Specificity:
Human

Background Information

ICAM2 is a cell adhesion protein having important roles in cell migration, especially during inflammation when leukocytes cross the endothelium. Initially described as a receptor for lymphocyte function-associated antigen-1 (LFA1), ICAM2 may play a role in lymphocyte recirculation by blocking LFA-1-dependent cell adhesion. It mediates adhesive interactions important for antigen-specific immune response, NK-cell mediated clearance, lymphocyte recirculation, and other cellular interactions important for immune response and surveillance.

Storage

Storage:
Store at -80°C.

Storage Buffer:
PBS Only

For technical support and original validation data for this product please contact:

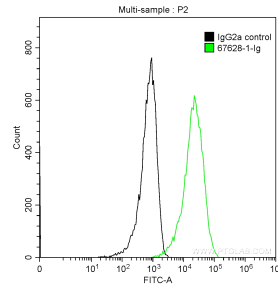
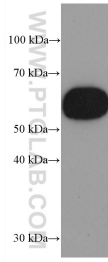
T: 4006900926

E: Proteintech-CN@ptglab.com

W: ptgcn.com

This product is exclusively available under Proteintech Group brand and is not available to purchase from any other manufacturer.

Selected Validation Data



human peripheral blood platelets were subjected to SDS PAGE followed by western blot with 67628-1-Ig (ICAM2 antibody) at dilution of 1:3000 incubated at room temperature for 1.5 hours. This data was developed using the same antibody clone with 67628-1-PBS in a different storage buffer formulation.

1X10⁶ HUVEC cells were stained with 0.2 ug Anti-Human ICAM2 (67628-1-Ig, Clone:1H3C6) and CoraLite®488-Conjugated AffiniPure Goat Anti-Mouse IgG(H+L) at dilution 1:1000 (green), or stained with 0.2 ug mouse IgG2a isotype control and CoraLite®488-Conjugated AffiniPure Goat Anti-Mouse IgG(H+L) at dilution 1:1000 (black). Cells were fixed with 90% MeOH. This data was developed using the same antibody clone with 67628-1-PBS in a

