

For Research Use Only

# CCDC6 Monoclonal antibody, PBS Only



Catalog Number: 67637-1-PBS

## Basic Information

<b>Catalog Number:</b> 67637-1-PBS	<b>GenBank Accession Number:</b> BC036757	<b>Purification Method:</b> Protein A purification
<b>Size:</b> 1 mg/ml	<b>GeneID (NCBI):</b> 8030	<b>CloneNo.:</b> 1D6A8
<b>Source:</b> Mouse	<b>UNIPROT ID:</b> Q16204	
<b>Isotype:</b> IgG1	<b>Full Name:</b> coiled-coil domain containing 6	
<b>Immunogen Catalog Number:</b> AG6952	<b>Calculated MW:</b> 474 aa, 53 kDa	
	<b>Observed MW:</b> 65 kDa	

## Applications

**Tested Applications:**  
WB, Indirect ELISA, IF

**Species Specificity:**  
Human, mouse, rat

## Background Information

CCDC6 (Coiled-coil domain-containing protein 6) is also named as Protein H4, D10S170 and TST1. CCDC6, was initially isolated as part of a tumorigenic DNA originated by the fusion of CCDC6 with the tyrosine kinase of RET receptor. CCDC6 has been considered as an accidental partner of the RET protooncogene, providing the promoter and the first 101 aa necessary for the constitutive activation of the oncogenic Tyrosine Kinase (TK) RET in thyroid cells. The 65 kDa product of CCDC6 has a nuclear transfer sequence with no transmembrane domains and is predicted to locate in both the nucleus and the cytoplasm (PMID: 29044514). The CCDC6 is a phosphoprotein, predicted target of several S/T kinases which can modulate the protein stability and the intracellular shuttling into the nucleus upon different cellular signals mediated by ERK1/2, ATM and CDK1/2. CCDC6 is involved in cellular response to DNA damage mediated by ATM, with the final result of promoting cellular apoptosis. CCDC6 depleted cells are considered defective of DNA repair checkpoint and proceed faster than the control cells in the cell cycle upon induced DNA damage (PMID: 22655027).

## Storage

**Storage:**  
Store at -80°C.  
**The product is shipped with ice packs. Upon receipt, store it immediately at -80°C**

**Storage Buffer:**  
PBS Only

For technical support and original validation data for this product please contact:

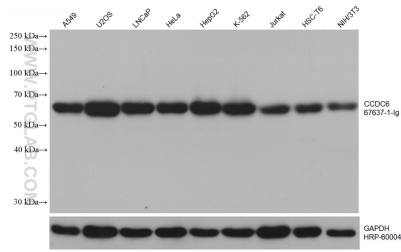
T: 4006900926

E: [Proteintech-CN@ptglab.com](mailto:Proteintech-CN@ptglab.com)

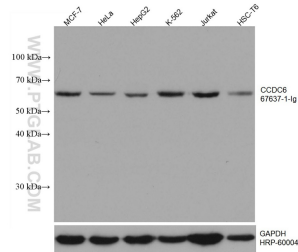
W: [ptgcn.com](http://ptgcn.com)

**This product is exclusively available under Proteintech Group brand and is not available to purchase from any other manufacturer.**

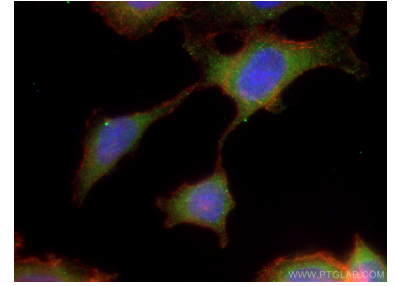
## Selected Validation Data



Various lysates were subjected to SDS PAGE followed by western blot with 67637-1-ig (CCDC6 antibody) at dilution of 1:10000 incubated at room temperature for 1.5 hours. The membrane was stripped and reblotted with HRP-conjugated GAPDH Monoclonal antibody (HRP-60004) as loading control. This data was developed using the same antibody clone with 67637-1-PBS in a different storage buffer formulation.



Various lysates were subjected to SDS PAGE followed by western blot with 67637-1-ig (CCDC6 antibody) at dilution of 1:10000 incubated at room temperature for 1.5 hours. The membrane was stripped and reblotted with HRP-conjugated GAPDH Monoclonal antibody (HRP-60004) as loading control. This data was developed using the same antibody clone with 67637-1-PBS in a different storage buffer formulation.



Immunofluorescent analysis of (-20°C Ethanol) fixed MCF-7 cells using CCDC6 antibody (67637-1-ig, Clone: 1D6A8) at dilution of 1:400 and CoraLite®488-Conjugated AffiniPure Goat Anti-Mouse IgG(H+L), CL594-Phalloidin (red). This data was developed using the same antibody clone with 67637-1-PBS in a different storage buffer formulation.