

For Research Use Only

ANO2 Monoclonal antibody, PBS Only

Catalog Number: 67638-1-PBS



Basic Information

Catalog Number:

67638-1-PBS

Size:

1 mg/ml

Source:

Mouse

Isotype:

IgG2a

GenBank Accession Number:

NM_020373

GeneID (NCBI):

57101

UNIPROT ID:

Q9NQ90

Full Name:

anoctamin 2

Calculated MW:

114 kDa

Observed MW:

114 kDa

Purification Method:

Protein A purification

CloneNo.:

2F12G1

Applications

Tested Applications:

WB, Indirect ELISA, IHC, IF

Species Specificity:

Human, mouse

Background Information

ANO2, also named as C12orf3 and TMEM16B, belongs to the anoctamin family. It acts as a calcium-activated chloride channel (CaCC), mostly in photoreceptors. It may mediate olfactory amplification in olfactory sensory neurons (OSNs) and light perception amplification in retina.

Storage

Storage:

Store at -80°C.

The product is shipped with ice packs. Upon receipt, store it immediately at -80°C

Storage Buffer:

PBS Only

For technical support and original validation data for this product please contact:

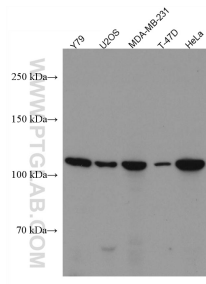
T: 4006900926

E: Proteintech-CN@ptglab.com

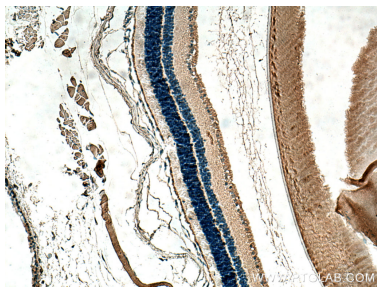
W: ptgcn.com

This product is exclusively available under Proteintech Group brand and is not available to purchase from any other manufacturer.

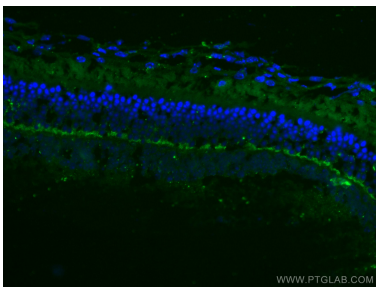
Selected Validation Data



Various lysates were subjected to SDS PAGE followed by western blot with 67638-1-Ig (ANO2 antibody) at dilution of 1:3000 incubated at room temperature for 1.5 hours. This data was developed using the same antibody clone with 67638-1-PBS in a different storage buffer formulation.



Immunohistochemical analysis of paraffin-embedded mouse eye tissue slide using 67638-1-Ig (ANO2 antibody) at dilution of 1:200 (under 10x lens). Heat mediated antigen retrieval with Tris-EDTA buffer (pH 9.0). This data was developed using the same antibody clone with 67638-1-PBS in a different storage buffer formulation.



Immunofluorescent analysis of (4% PFA) fixed mouse eye tissue using ANO2 antibody (67638-1-Ig, Clone: 2F12G1) at dilution of 1:400 and CoraLite®488-Conjugated AffiniPure Goat Anti-Mouse IgG(H+L). This data was developed using the same antibody clone with 67638-1-PBS in a different storage buffer formulation.