

For Research Use Only

ETF A Monoclonal antibody, PBS Only

Catalog Number: 67661-1-PBS



Basic Information

Catalog Number: 67661-1-PBS	GenBank Accession Number: BC015526	Purification Method: Protein A purification
Size: 1 mg/ml	GeneID (NCBI): 2108	CloneNo.: 3C12G5
Source: Mouse	UNIPROT ID: P13804	
Isotype: IgG2a	Full Name: electron-transfer-flavoprotein, alpha polypeptide	
Immunogen Catalog Number: AG30257	Calculated MW: 30 kDa	
	Observed MW: 30 kDa	

Applications

Tested Applications:
WB, Indirect ELISA, IHC, IF

Species Specificity:
Human, mouse, rat, pig

Background Information

The electron transfer flavoprotein (ETF), located in the mitochondrial matrix, is a nuclear-encoded enzyme delivering to the respiratory chain by straight-chain acyl-CoA dehydrogenases and other dehydrogenases. Mitochondrial fatty acids oxidation and amino acids metabolism are affected in MADD (Multiple acyl-CoA dehydrogenase deficiency). These disorders are linked to a dysfunction of ETF. ETF is a mitochondrial matrix protein consisting of alpha- (30kDa) and beta- (28kDa) subunits encoded by the ETF A and ETF B genes, respectively. (PMID: 31996215, PMID: 16510302)

Storage

Storage:
Store at -80°C.
The product is shipped with ice packs. Upon receipt, store it immediately at -80°C

Storage Buffer:
PBS Only

For technical support and original validation data for this product please contact:

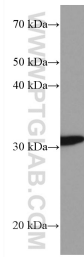
T: 4006900926

E: Proteintech-CN@ptglab.com

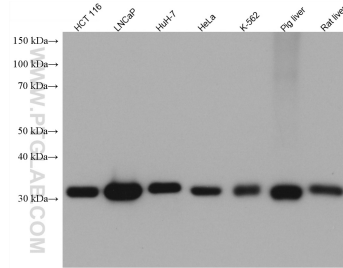
W: ptgcn.com

This product is exclusively available under Proteintech Group brand and is not available to purchase from any other manufacturer.

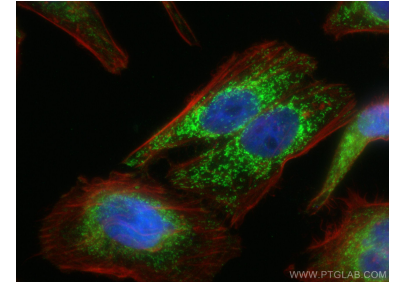
Selected Validation Data



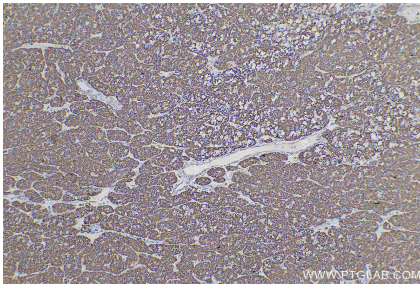
mouse brain tissue were subjected to SDS PAGE followed by western blot with 67661-1-Ig (ETFA antibody) at dilution of 1:10000 incubated at room temperature for 1.5 hours. This data was developed using the same antibody clone with 67661-1-PBS in a different storage buffer formulation.



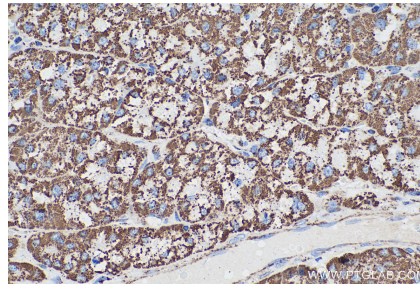
Various lysates were subjected to SDS PAGE followed by western blot with 67661-1-Ig (ETFA antibody) at dilution of 1:10000 incubated at room temperature for 1.5 hours. This data was developed using the same antibody clone with 67661-1-PBS in a different storage buffer formulation.



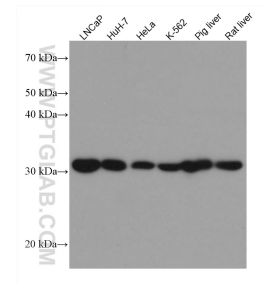
Immunofluorescent analysis of (4% PFA) fixed HepG2 cells using ETFA antibody (67661-1-Ig, Clone: 3C12G5) at dilution of 1:400 and CoraLite®488-Conjugated AffiniPure Goat Anti-Mouse IgG(H+L), CL594-Phalloidin (red). DAPI (blue). This data was developed using the same antibody clone with 67661-1-PBS in a different storage buffer formulation.



Immunohistochemical analysis of paraffin-embedded human liver cancer tissue slide using 67661-1-Ig (ETFA antibody) at dilution of 1:16000 (under 10x lens). Heat mediated antigen retrieval with Tris-EDTA buffer (pH 9.0). This data was developed using the same antibody clone with 67661-1-PBS in a different storage buffer formulation.



Immunohistochemical analysis of paraffin-embedded human liver cancer tissue slide using 67661-1-Ig (ETFA antibody) at dilution of 1:16000 (under 40x lens). Heat mediated antigen retrieval with Tris-EDTA buffer (pH 9.0). This data was developed using the same antibody clone with 67661-1-PBS in a different storage buffer formulation.



Various lysates were subjected to SDS PAGE followed by western blot with 67661-1-Ig (ETFA antibody) at dilution of 1:10000 incubated at room temperature for 1.5 hours. This data was developed using the same antibody clone with 67661-1-PBS in a different storage buffer formulation.