

For Research Use Only

NF45 Monoclonal antibody, PBS Only



Catalog Number: 67685-1-PBS

Basic Information

Catalog Number:

67685-1-PBS

Size:

1 mg/ml

Source:

Mouse

Isotype:

IgG2b

Immunogen Catalog Number:

AG30388

GenBank Accession Number:

BC000382

GeneID (NCBI):

3608

UNIPROT ID:

Q12905

Full Name:

interleukin enhancer binding factor 2,

45kDa

Calculated MW:

43 kDa

Observed MW:

40 kDa

Purification Method:

Protein A purification

CloneNo.:

1A3A2

Applications

Tested Applications:

WB,IP,Indirect ELISA,IHC,IF

Species Specificity:

Human, mouse, rat

Background Information

Interleukin-2 enhancer binding factor 2 (ILF2), also named as nuclear factor 45 (NF45), plays important roles in regulating interleukin-2 expression in mammals. It forms a heterodimeric complex with ILF3, which may regulate transcription of the IL2 gene during T-cell activation. It can also promote the formation of stable DNA-dependent protein kinase holoenzyme complexes on DNA [PMID:11739746,17129403].

Storage

Storage:

Store at -80°C.

The product is shipped with ice packs. Upon receipt, store it immediately at -80°C

Storage Buffer:

PBS Only

For technical support and original validation data for this product please contact:

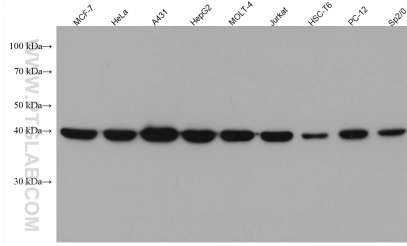
T: 4006900926

E: Proteintech-CN@ptglab.com

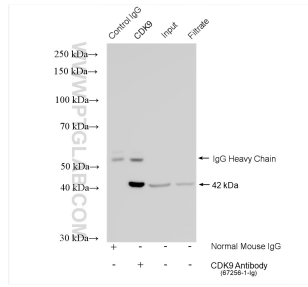
W: ptgcn.com

This product is exclusively available under Proteintech Group brand and is not available to purchase from any other manufacturer.

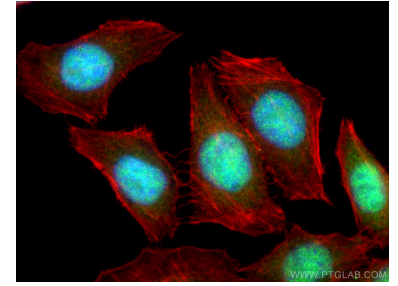
Selected Validation Data



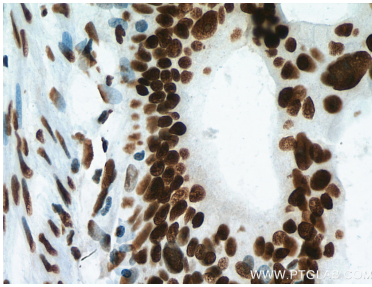
Various lysates were subjected to SDS PAGE followed by western blot with 67685-1-Ig (NF45 antibody) at dilution of 1:20000 incubated at room temperature for 1.5 hours. This data was developed using the same antibody clone with 67685-1-PBS in a different storage buffer formulation.



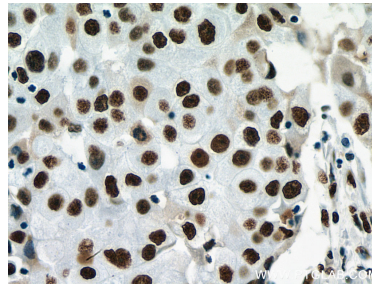
IP result of anti-NF45 (IP:67685-1-Ig, 4ug; Detection:67685-1-Ig 1:3000) with HeLa cells lysate 1320 ug. This data was developed using the same antibody clone with 67685-1-PBS in a different storage buffer formulation.



Immunofluorescent analysis of (4% PFA) fixed HepG2 cells using NF45 antibody (67685-1-Ig, Clone: 1A3A2) at dilution of 1:400 and CoraLite®488-Conjugated AffiniPure Goat Anti-Mouse IgG(H+L). This data was developed using the same antibody clone with 67685-1-PBS in a different storage buffer formulation.



Immunohistochemical analysis of paraffin-embedded human colon cancer tissue slide using 67685-1-Ig (NF45 antibody) at dilution of 1:2000 (under 40x lens). Heat mediated antigen retrieval with Tris-EDTA buffer (pH 9.0). This data was developed using the same antibody clone with 67685-1-PBS in a different storage buffer formulation.



Immunohistochemical analysis of paraffin-embedded human breast cancer tissue slide using 67685-1-Ig (NF45 antibody) at dilution of 1:2000 (under 40x lens). Heat mediated antigen retrieval with Tris-EDTA buffer (pH 9.0). This data was developed using the same antibody clone with 67685-1-PBS in a different storage buffer formulation.