

For Research Use Only

# ESYT1 Monoclonal antibody

Catalog Number: 67688-1-Ig

Featured Product

1 Publications



## Basic Information

Catalog Number:

67688-1-Ig

Size:

900 µg/ml

Source:

Mouse

Isotype:

IgG2a

Immunogen Catalog Number:

AG16840

GenBank Accession Number:

BC004998

GeneID (NCBI):

23344

UNIPROT ID:

Q9BSJ8

Full Name:

family with sequence similarity 62 (C2 domain containing), member A

Calculated MW:

1104 aa, 123 kDa

Observed MW:

123 kDa

Purification Method:

Protein A purification

CloneNo.:

2C12E4

Recommended Dilutions:

WB 1:2000-1:10000

IF 1:400-1:1600

## Applications

Tested Applications:

WB, IF/ICC, ELISA

Cited Applications:

WB

Species Specificity:

Human, rat

Cited Species:

human

Positive Controls:

WB : HepG2 cells, HSC-T6 cells, MOLT-4 cells, Jurkat cells, K-562 cells, THP-1 cells

IF : U2OS cells,

## Background Information

### Notable Publications

Author	Pubmed ID	Journal	Application
Arsila P. K. Ashraf	36200035	Front Cell Dev Biol	WB

## Storage

Storage:

Store at -20°C. Stable for one year after shipment.

Storage Buffer:

PBS with 0.02% sodium azide and 50% glycerol pH 7.3.

Aliquoting is unnecessary for -20°C storage

For technical support and original validation data for this product please contact:

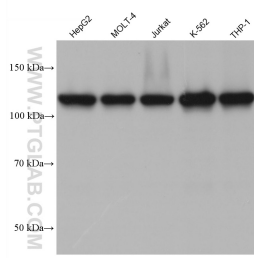
T: 4006900926

E: Proteintech-CN@ptglab.com

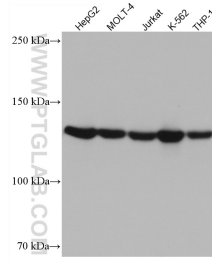
W: ptgcn.com

This product is exclusively available under Proteintech Group brand and is not available to purchase from any other manufacturer.

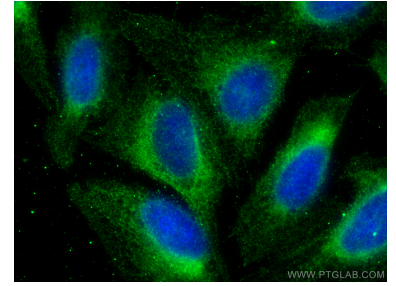
## Selected Validation Data



Various lysates were subjected to SDS PAGE followed by western blot with 67688-1-Ig (ESYT1 antibody) at dilution of 1:5000 incubated at room temperature for 1.5 hours.



Various lysates were subjected to SDS PAGE followed by western blot with 67688-1-Ig (FAM62A antibody) at dilution of 1:2500 incubated at room temperature for 1.5 hours.



Immunofluorescent analysis of (-20°C Methanol) fixed U2OS cells using ESYT1 antibody (67688-1-Ig, Clone: 2C12E4) at dilution of 1:800 and CoraLite®488-Conjugated AffiniPure Goat Anti-Mouse IgG(H+L).