

For Research Use Only

# PSMA6 Monoclonal antibody

Catalog Number: 67695-1-Ig



## Basic Information

<b>Catalog Number:</b> 67695-1-Ig	<b>GenBank Accession Number:</b> BC023659	<b>Purification Method:</b> Protein A purification
<b>Size:</b> 1000 µg/ml	<b>GeneID (NCBI):</b> 5687	<b>CloneNo.:</b> 1D4B2
<b>Source:</b> Mouse	<b>UNIPROT ID:</b> P60900	<b>Recommended Dilutions:</b> WB 1:2000-1:10000 IHC 1:250-1:1000 IF-P 1:200-1:800 IF/ICC 1:400-1:1600
<b>Isotype:</b> IgG2b	<b>Full Name:</b> proteasome (prosome, macropain) subunit, alpha type, 6	
<b>Immunogen Catalog Number:</b> AG21761	<b>Calculated MW:</b> 246 aa, 27 kDa	
	<b>Observed MW:</b> 30 kDa	

## Applications

**Tested Applications:**  
WB, IHC, IF/ICC, IF-P, FC (Intra), ELISA

**Species Specificity:**  
human, mouse, rat

**Note-IHC: suggested antigen retrieval with TE buffer pH 9.0; (\*) Alternatively, antigen retrieval may be performed with citrate buffer pH 6.0**

### Positive Controls:

**WB :** HeLa cells, HEK-293 cells, HepG2 cells, Jurkat cells, K-562 cells, HSC-T6 cells, NIH/3T3 cells

**IHC :** human lung cancer tissue,

**IF-P :** human lung cancer tissue,

**IF/ICC :** HeLa cells,

## Background Information

PSMA6 (Proteasome subunit alpha type-6) is also named as PROS27 and belongs to the peptidase T1A family. The proteasome is a multicatalytic proteinase complex which is characterized by its ability to cleave peptides with Arg, Phe, Tyr, Leu, and Glu adjacent to the leaving group at neutral or slightly basic pH. It also has an ATP-dependent proteolytic activity.

## Storage

**Storage:**  
Store at -20°C. Stable for one year after shipment.

**Storage Buffer:**  
PBS with 0.02% sodium azide and 50% glycerol pH 7.3.

**Aliquoting is unnecessary for -20°C storage**

For technical support and original validation data for this product please contact:

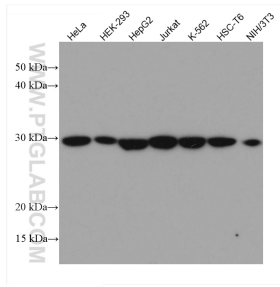
T: 4006900926

E: [Proteintech-CN@ptglab.com](mailto:Proteintech-CN@ptglab.com)

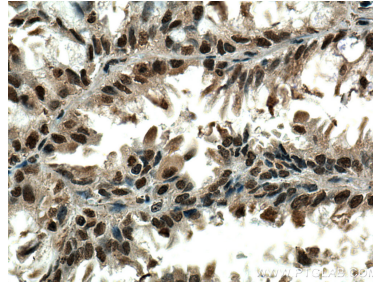
W: [ptgcn.com](http://ptgcn.com)

**This product is exclusively available under Proteintech Group brand and is not available to purchase from any other manufacturer.**

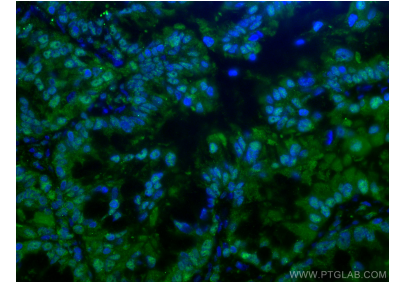
## Selected Validation Data



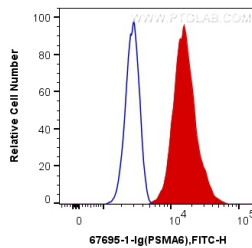
Various lysates were subjected to SDS PAGE followed by western blot with 67695-1-Ig (PSMA6 antibody) at dilution of 1:5000 incubated at room temperature for 1.5 hours.



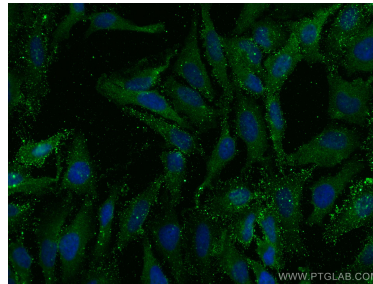
Immunohistochemical analysis of paraffin-embedded human lung cancer tissue slide using 67695-1-Ig (PSMA6 antibody) at dilution of 1:500 (under 40x lens). Heat mediated antigen retrieval with Tris-EDTA buffer (pH 9.0).



Immunofluorescent analysis of (4% PFA) fixed human lung cancer tissue using PSMA6 antibody (67695-1-Ig, Clone: 1D4B2) at dilution of 1:400 and CoraLite@488-Conjugated AffiniPure Goat Anti-Mouse IgG(H+L).



1X10<sup>6</sup> HepG2 cells were intracellularly stained with 0.4 ug Anti-Human PSMA6 (67695-1-Ig, Clone:1D4B2) and CoraLite@488-Conjugated AffiniPure Goat Anti-Mouse IgG(H+L) at dilution 1:1000 (red), or 0.4 ug Control Antibody. Cells were fixed and permeabilized with Transcription Factor Staining Buffer Kit (PF00011).



Immunofluorescent analysis of (4% PFA) fixed HeLa cells using PSMA6 antibody (67695-1-Ig, Clone: 1D4B2) at dilution of 1:800 and CoraLite@488-Conjugated AffiniPure Goat Anti-Mouse IgG(H+L).