

For Research Use Only

PSMA6 Monoclonal antibody, PBS Only



Catalog Number: 67695-1-PBS

Basic Information

Catalog Number: 67695-1-PBS	GenBank Accession Number: BC023659	Purification Method: Protein A purification
Size: 1mg/ml	GeneID (NCBI): 5687	CloneNo.: 1D4B2
Source: Mouse	UNIPROT ID: P60900	
Isotype: IgG2b	Full Name: proteasome (prosome, macropain) subunit, alpha type, 6	
Immunogen Catalog Number: AG21761	Calculated MW: 246 aa, 27 kDa	
	Observed MW: 30 kDa	

Applications

Tested Applications:
WB, IHC, IF/ICC, IF-P, FC (Intra), ELISA

Species Specificity:
human, mouse, rat

Background Information

PSMA6 (Proteasome subunit alpha type-6) is also named as PROS27 and belongs to the peptidase T1A family. The proteasome is a multicatalytic proteinase complex which is characterized by its ability to cleave peptides with Arg, Phe, Tyr, Leu, and Glu adjacent to the leaving group at neutral or slightly basic pH. It also has an ATP-dependent proteolytic activity.

Storage

Storage:
Store at -80°C.
The product is shipped with ice packs. Upon receipt, store it immediately at -80°C

Storage Buffer:
PBS Only

For technical support and original validation data for this product please contact:

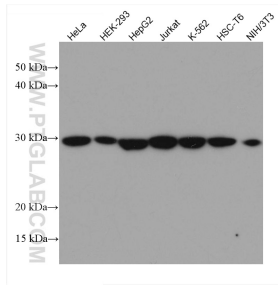
T: 4006900926

E: Proteintech-CN@ptglab.com

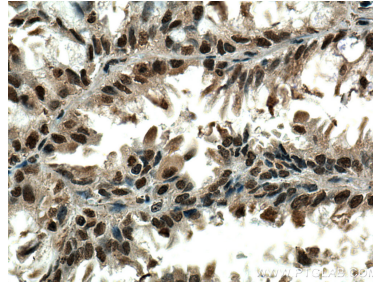
W: ptgcn.com

This product is exclusively available under Proteintech Group brand and is not available to purchase from any other manufacturer.

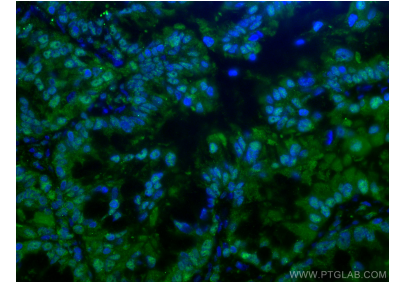
Selected Validation Data



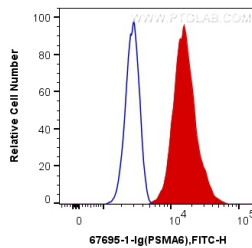
Various lysates were subjected to SDS PAGE followed by western blot with 67695-1-Ig (PSMA6 antibody) at dilution of 1:5000 incubated at room temperature for 1.5 hours. This data was developed using the same antibody clone with 67695-1-PBS in a different storage buffer formulation.



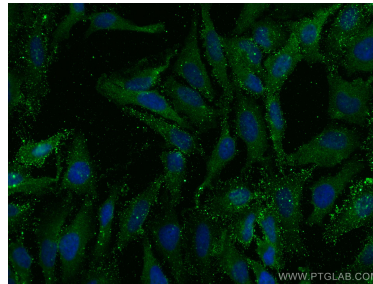
Immunohistochemical analysis of paraffin-embedded human lung cancer tissue slide using 67695-1-Ig (PSMA6 antibody) at dilution of 1:500 (under 40x lens). Heat mediated antigen retrieval with Tris-EDTA buffer (pH 9.0). This data was developed using the same antibody clone with 67695-1-PBS in a different storage buffer formulation.



Immunofluorescent analysis of (4% PFA) fixed human lung cancer tissue using PSMA6 antibody (67695-1-Ig, Clone: 1D4B2) at dilution of 1:400 and CoraLite®488-Conjugated AffiniPure Goat Anti-Mouse IgG(H+L). This data was developed using the same antibody clone with 67695-1-PBS in a different storage buffer formulation.



1X10⁶ HepG2 cells were intracellularly stained with 0.4 ug Anti-Human PSMA6 (67695-1-Ig, Clone:1D4B2) and CoraLite®488-Conjugated AffiniPure Goat Anti-Mouse IgG(H+L) at dilution 1:1000 (red), or 0.4 ug Control Antibody. Cells were fixed and permeabilized with Transcription Factor Staining Buffer Kit (PF00011). This data was developed using the same antibody clone with 67695-1-PBS in a different storage buffer formulation.



Immunofluorescent analysis of (4% PFA) fixed HeLa cells using PSMA6 antibody (67695-1-Ig, Clone: 1D4B2) at dilution of 1:800 and CoraLite®488-Conjugated AffiniPure Goat Anti-Mouse IgG(H+L). This data was developed using the same antibody clone with 67695-1-PBS in a different storage buffer formulation.