

For Research Use Only

SLC6A12 Monoclonal antibody

Catalog Number: 67700-1-Ig **2 Publications**



Basic Information

Catalog Number:

67700-1-Ig

Size:

1700 µg/ml

Source:

Mouse

Isotype:

IgG2a

Immunogen Catalog Number:

AG18962

GenBank Accession Number:

BC126215

GeneID (NCBI):

6539

UNIPROT ID:

P48065

Full Name:

solute carrier family 6
(neurotransmitter transporter,
betaine/GABA), member 12

Calculated MW:

614 aa, 69 kDa

Observed MW:

70 kDa

Purification Method:

Protein A purification

CloneNo.:

2C1G4

Recommended Dilutions:

WB 1:1000-1:4000

IF/ICC 1:200-1:800

Applications

Tested Applications:

IF/ICC, WB, ELISA

Cited Applications:

WB

Species Specificity:

Human, Mouse, Rat

Cited Species:

mouse, canine

Positive Controls:

WB : L02 cells, rat liver tissue, HSC-T6 cells, HuH-7 cells, HepG2 cells, mouse hepatocytes

IF/ICC : Caco-2 cells,

Background Information

Notable Publications

Author	Pubmed ID	Journal	Application
Eva S Schweikhard	24829506	Am J Physiol Renal Physiol	WB
Xianzheng Zhang	38904021	Int J Biol Sci	WB

Storage

Storage:

Store at -20°C. Stable for one year after shipment.

Storage Buffer:

PBS with 0.02% sodium azide and 50% glycerol pH 7.3.

Aliquoting is unnecessary for -20°C storage

For technical support and original validation data for this product please contact:

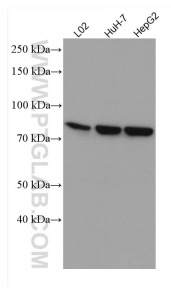
T: 4006900926

E: Proteintech-CN@ptglab.com

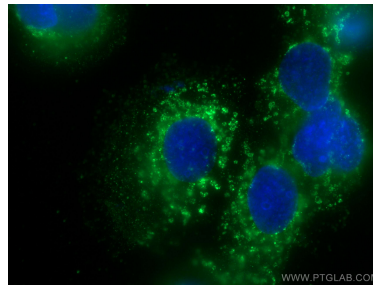
W: ptgcn.com

This product is exclusively available under Proteintech Group brand and is not available to purchase from any other manufacturer.

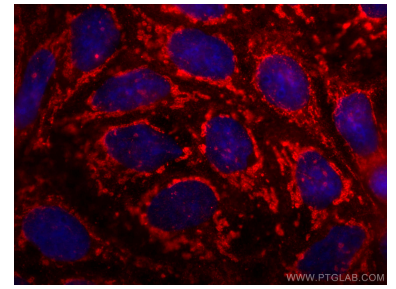
Selected Validation Data



Various lysates were subjected to SDS PAGE followed by western blot with 67700-1-Ig (SLC6A12 antibody) at dilution of 1:2000 incubated at room temperature for 1.5 hours.



Immunofluorescent analysis of (-20°C Methanol) fixed Caco-2 cells using SLC6A12 antibody (67700-1-Ig, Clone: 2C1G4) at dilution of 1:400 and CoraLite®488-Conjugated AffiniPure Goat Anti-Mouse IgG(H+L).



Immunofluorescent analysis of (-20°C Ethanol) fixed Caco-2 cells using SLC6A12 antibody (67700-1-Ig, Clone: 2C1G4) at dilution of 1:800 and CoraLite®594-Conjugated AffiniPure Goat Anti-Mouse IgG(H+L).